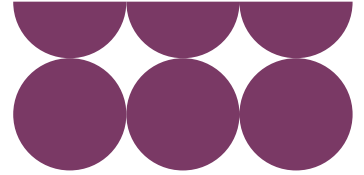


11 March 2025

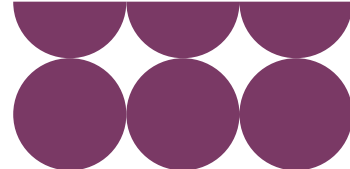
# Provisional Auction Report

2024 Four Year Ahead Capacity  
Auction (T-4)  
Delivery Year 2028/29



## Contents

Disclaimer .....	3
Confidentiality.....	3
Executive Summary.....	4
Results Summary.....	5
Capacity procured by Delivery year.....	9
Appendix A Results by CMU.....	10



## **Disclaimer**

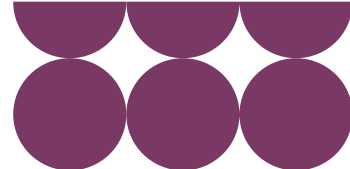
This document has been prepared by EMR Delivery Body in National Energy System Operator Limited (NESO) and whilst NESO has taken all reasonable care in preparing this document, no representation or warranty either expressed or implied is made as to the accuracy or completeness of the information that it contains and parties using information within the document should make their own enquiries as to its accuracy and suitability for the purpose for which they use it. Neither NESO nor any Directors or employees of any such company shall be liable for any error or misstatement or opinion on which the recipient of this document relies or seeks to rely other than fraudulent misstatement or fraudulent misrepresentation and does not accept any responsibility for any use which is made of the information or the document or (to the extent permitted by law) for any damages or losses incurred.

In the event of any conflict or inconsistency between this document and the Capacity Market Rules, the Electricity Capacity Regulations or the Auction Guidelines, the latter documents take precedence. Capitalised terms used in this document shall have the same meanings given in the Capacity Market Rules.

## **Confidentiality**

This Provisional Auction report and its contents should be considered as confidential in nature, and this document is supplied on this basis. No part of this document may be reproduced in any material form (including photocopying and restoring in any medium or electronic means and whether transiently or incidentally) without the written permission of NESO.

Copyright National Energy System Operator 2025, all rights reserved.



## Executive Summary

National Energy System Operator Limited (NESO) in its role as EMR Delivery Body is required by the Capacity Market Rules 2014 (Rule 5.10.2) to notify the Secretary of State of the Provisional Results of the Capacity Market Auction as soon as reasonably practicable following the conclusion of the Capacity Auction. This report discharges that obligation.

The **T-4 Capacity Auction for delivery in 2028/29** concluded on **11 March 2025, 11:30 GMT**. The results of the Capacity Auction are that **43,055.073 MW** is procured across **669 CMUs**, where any Capacity figure refers to De-rated Capacity, except for DSR CMUs where the Capacity figure is Bidding Capacity.

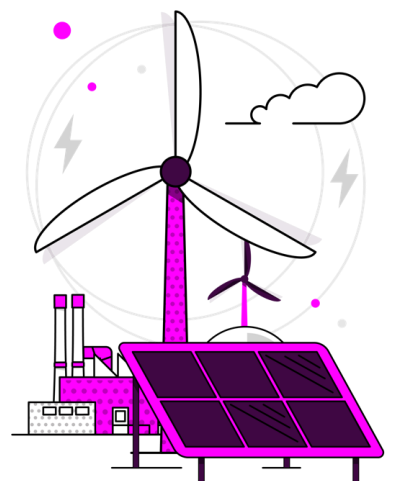
The CMUs to which a Capacity Agreement has been awarded and the duration of those Capacity Agreements are listed in the CMU results section (page 10).

In addition to the results presented above, NESO is required under Capacity Market Rule 5.10.3 to report any CMUs that were removed from the IT Auction System under Capacity Market Rule 5.3.3. The Auction concluded without any CMUs being removed from the system by NESO.

The remainder of this report gives further detail on the Capacity Market Auction Clearing, how the Clearing Price was reached and what makes up the Capacity that has been procured.

The results of the Capacity Auction are provisional for the period of 8 working days after the completion of the Capacity Market Auction, during which time the Secretary of State may annul the Capacity Auction on the grounds specified in Regulation 27 of the Electricity Capacity Regulations 2014.

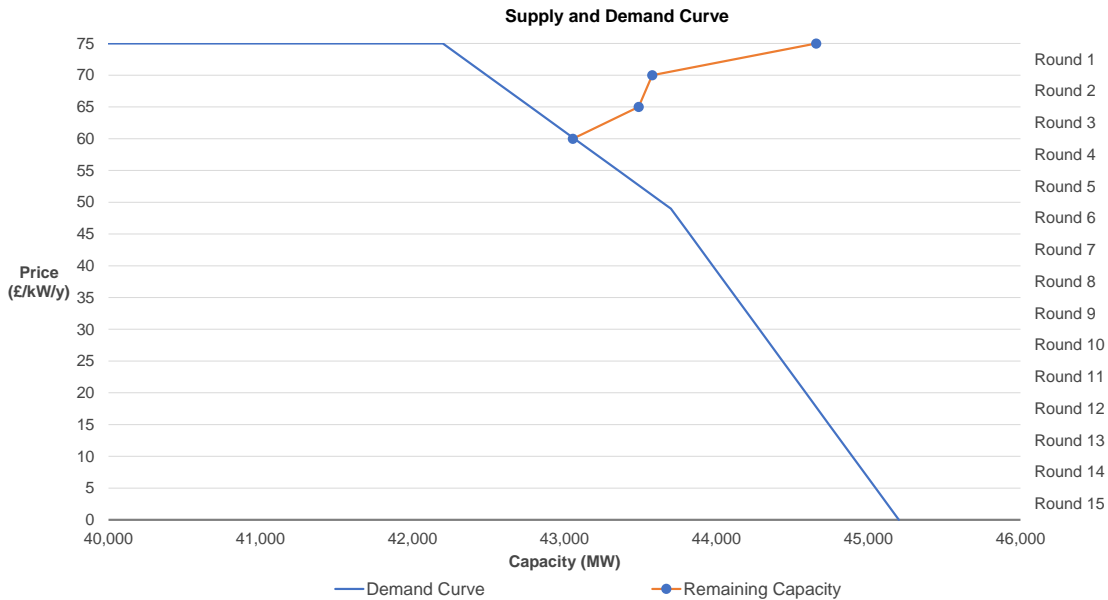
Any T-4 (Delivery Year 2028/29) data shown within this document originates from the latest Capacity Market Register available at the time this document was published.



The high level auction results are summarised below including a round by round summary graph. As shown within the round summary, the auction cleared in Round 3.

**Auction Results**

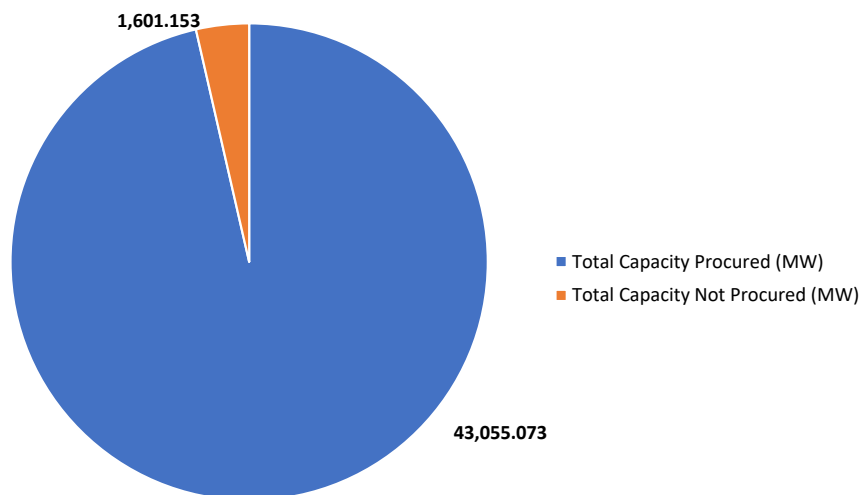
Auction and Delivery Year	<b>T-4 DY2028/29</b>
Date and time auction cleared	<b>11/03/2025 11:30</b>
Clearing Price	<b>£60.00</b>
Aggregate Capacity of CMUs awarded Capacity Agreements	<b>43,055.073 MW</b>
Target Capacity	<b>43,700 MW</b>
Capacity entering auction and proportion awarded an agreement	<b>44,656.226 MW (96.41% awarded an agreement)</b>
Number of CMUs awarded an agreement	<b>669</b>
Number of Parent companies awarded an agreement	<b>172</b>
Number of Applicant companies awarded an agreement	<b>275</b>



**Figure 1: Auction Results Graph**

**Capacity Auction Results - Total Capacity Procured**

The chart below details the split between the amount of Capacity procured and the Capacity not procured from that which entered the T-4 Capacity Auction.



**Figure 2: Capacity Procured vs Not Procured**

Capacity Awarded by CMU Type (MW)

Figure 3 and Table 1 below show the breakdown by the generating type of CMUs that were awarded an agreement and those CMUs who exited the auction above the clearing price.

Existing CMUs and Proven DSR CMUs made up 81% (36,306.31 MW) of the Capacity entering the Auction. New Build CMUs and Unproven DSR CMUs amounted to 19% (8,349.916 MW) of total Capacity entering the Auction. Of the Total Capacity Awarded, Existing Generating was awarded 53% of the total Agreements, New Build was awarded 19% and DSR was awarded 25%.

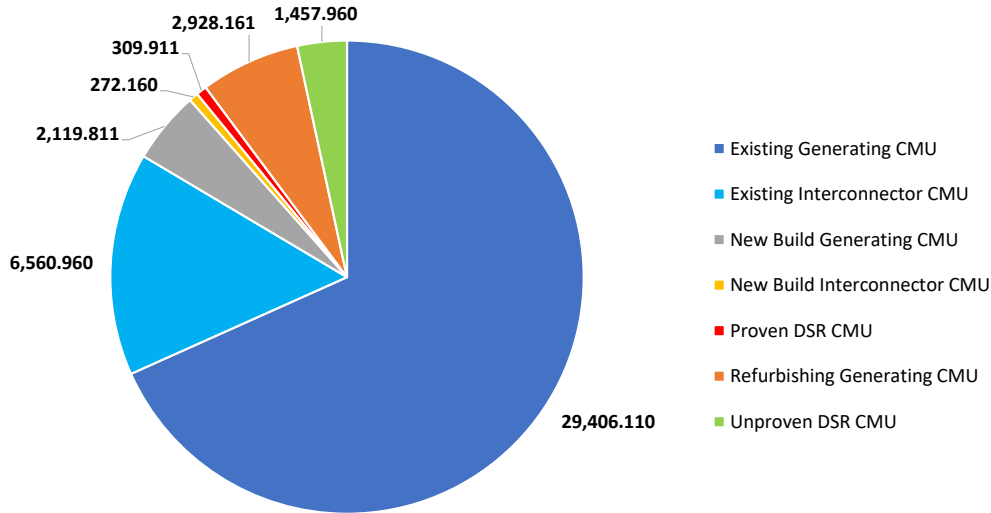


Figure 3: Capacity in MW awarded by CMU Type

The table below shows the breakdown by the **generating type** of CMUs that were awarded an agreement and those CMUs who exited the auction above the clearing price.

CMU Type	Awarded Capacity (MW)	Awarded Capacity (%)	Units Awarded	Awarded Units (%)	Exited Units	Exited Capacity (MW)
Existing Generating CMU	29,406.110	68.30%	357	53.36%	4	29.329
Existing Interconnector CMU	6,560.960	15.24%	9	1.35%	0	0.000
New Build Generating CMU	2,119.811	4.92%	125	18.68%	30	682.632
New Build Interconnector CMU	272.160	0.63%	1	0.15%	0	0.000
Proven DSR CMU	309.911	0.72%	44	6.58%	0	0.000
Refurbishing Generating CMU	2,928.161	6.80%	7	1.05%	1	727.145
Unproven DSR CMU	1,457.960	3.39%	126	18.83%	17	162.047
<b>Total</b>	<b>43,055.073</b>	<b>100.00%</b>	<b>669</b>	<b>100.00%</b>	<b>52</b>	<b>1,601.153</b>

Table 1: Capacity in MW awarded by CMU Type



The figure below shows the breakdown by the **primary fuel type** of CMUs that were awarded an agreement and those CMUs who exited the auction above the clearing price.

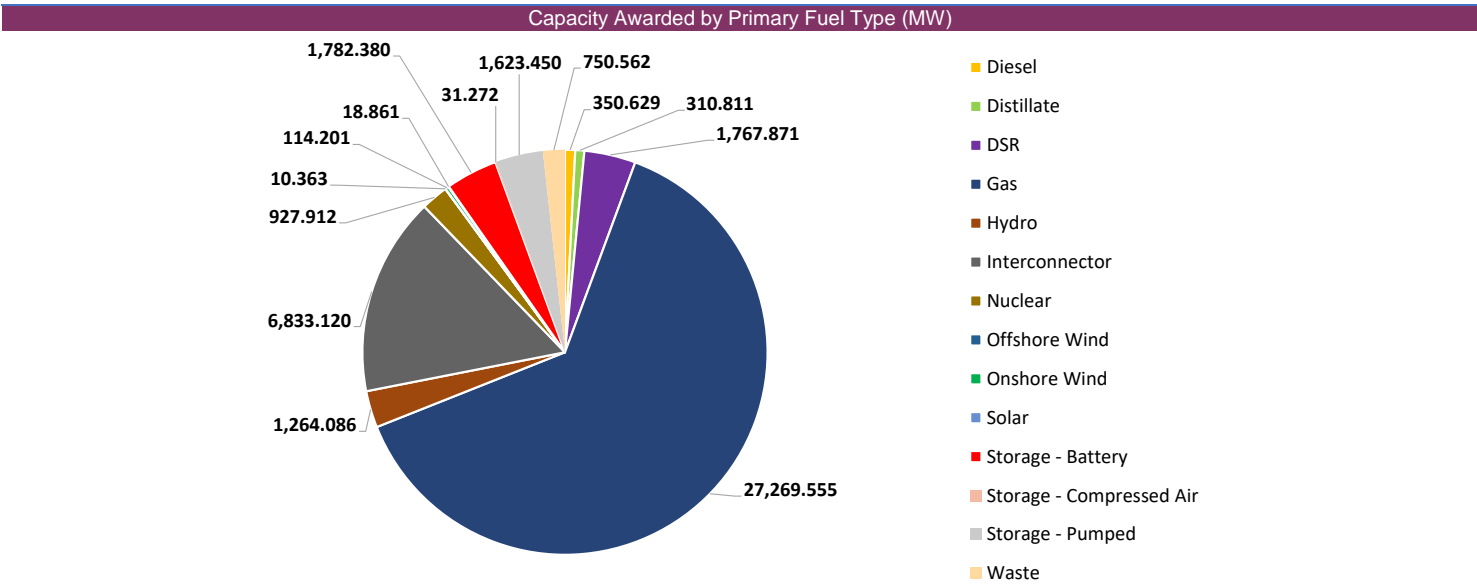


Figure 4: Capacity in MW awarded by Primary Fuel Type

Table 2 provides further detail into the Primary Fuel including total capacity (in MW and percentage) of Capacity Agreements Awarded, total number of Capacity Agreements awarded and exited Capacity.

Primary Fuel Type	Awarded Capacity (MW)	Awarded Capacity (%)	Units Awarded	Awarded Units (%)	Exited Units	Exited Capacity (MW)
Bio-fuel	0.000	0.00%	0	0.00%	1	18.698
Biomass	0.000	0.00%	0	0.00%	0	0.000
Diesel	350.629	0.81%	10	1.49%	0	0.000
Distillate	310.811	0.72%	9	1.35%	0	0.000
DSR	1,767.871	4.11%	170	25.41%	17	162.047
Gas	27,269.555	63.34%	189	28.25%	17	1,238.123
Hydro	1,264.086	2.94%	83	12.41%	0	0.000
Interconnector	6,833.120	15.87%	10	1.49%	0	0.000
Nuclear	927.912	2.16%	2	0.30%	0	0.000
Offshore Wind	10.363	0.02%	2	0.30%	0	0.000
Onshore Wind	114.201	0.27%	33	4.93%	0	0.000
Solar	18.861	0.04%	12	1.79%	0	0.000
Storage - Battery	1,782.380	4.14%	111	16.59%	17	182.285
Storage - Compressed Air	31.272	0.07%	1	0.15%	0	0.000
Storage - Pumped	1,623.450	3.77%	8	1.20%	0	0.000
Waste	750.562	1.74%	29	4.33%	0	0.000
No Primary Fuel Type	0.000	0.00%	0	0.00%	0	0.000

Table 2: Capacity in MW awarded by Primary Fuel Type

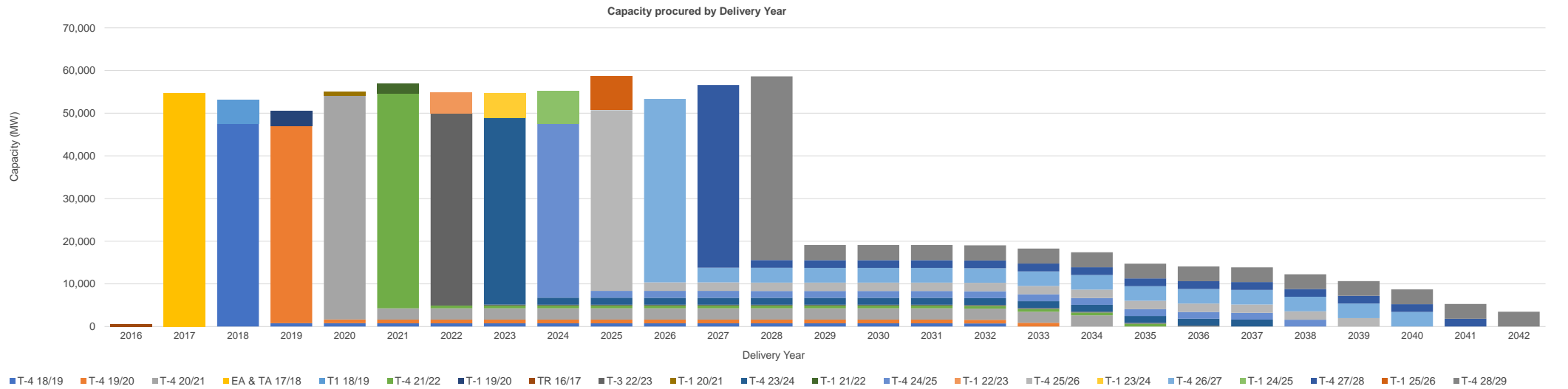
Awarded and exited capacity by technology type						
	Breakdown of awarded capacity			Breakdown of capacity exiting the auction		
	Capacity MW	%	No. CMU	Capacity MW	%	No. CMU
<b>Existing Generating CMU</b>	<b>29,406.110</b>	<b>68.30%</b>	<b>357</b>	<b>29.329</b>	<b>1.83%</b>	<b>4</b>
Biomass	0.000	0.00%		0.000	0.00%	
Combined Cycle Gas Turbine (CCGT)	18,522.428	43.02%		0.000	0.00%	
Combined Heat and Power (CHP)	3,963.989	9.21%		29.329	1.83%	
Energy from Waste	616.648	1.43%		0.000	0.00%	
Hydro	1,219.496	2.83%		0.000	0.00%	
Nuclear	927.912	2.16%		0.000	0.00%	
Offshore Wind	10.363	0.02%		0.000	0.00%	
Onshore Wind	105.210	0.24%		0.000	0.00%	
Open Cycle Gas Turbine (OCGT)	1,898.217	4.41%		0.000	0.00%	
Reciprocating engines	479.616	1.11%		0.000	0.00%	
Solar Photovoltaic	13.103	0.03%		0.000	0.00%	
Storage (Duration 1h)	21.209	0.05%		0.000	0.00%	
Storage (Duration 1.5h)	0.000	0.00%		0.000	0.00%	
Storage (Duration 2h)	4.469	0.01%		0.000	0.00%	
Storage (Duration 2.5h)	0.000	0.00%		0.000	0.00%	
Storage (Duration 3h)	0.000	0.00%		0.000	0.00%	
Storage (Duration 4h)	0.000	0.00%		0.000	0.00%	
Storage (Duration 5h)	0.000	0.00%		0.000	0.00%	
Storage (Duration 6h)	0.000	0.00%		0.000	0.00%	
Storage (Duration 8h)	0.000	0.00%		0.000	0.00%	
Storage (Duration 8.5h)	0.000	0.00%		0.000	0.00%	
Storage (Duration 9h)	1,400.274	3.25%		0.000	0.00%	
Storage (Duration 12h)	223.176	0.52%		0.000	0.00%	
<b>New Build Generating CMU</b>	<b>2,119.811</b>	<b>4.92%</b>	<b>125</b>	<b>682.632</b>	<b>42.63%</b>	<b>30</b>
Biomass	0.000	0.00%		0.000	0.00%	
Combined Cycle Gas Turbine (CCGT)	0.000	0.00%		0.000	0.00%	
Combined Heat and Power (CHP)	4.481	0.01%		5.412	0.34%	
Energy from Waste	138.824	0.32%		0.000	0.00%	
Hydro	0.000	0.00%		0.000	0.00%	
Nuclear	0.000	0.00%		0.000	0.00%	
Offshore Wind	0.000	0.00%		0.000	0.00%	
Onshore Wind	8.991	0.02%		0.000	0.00%	
Open Cycle Gas Turbine (OCGT)	0.000	0.00%		308.517	19.27%	
Reciprocating engines	173.783	0.40%		186.418	11.64%	
Solar Photovoltaic	5.758	0.01%		0.000	0.00%	
Storage (Duration 1h)	0.785	0.00%		0.000	0.00%	
Storage (Duration 1.5h)	80.705	0.19%		52.127	3.26%	
Storage (Duration 2h)	781.982	1.82%		83.797	5.23%	
Storage (Duration 2.5h)	8.874	0.02%		1.140	0.07%	
Storage (Duration 3h)	35.289	0.08%		0.000	0.00%	
Storage (Duration 4h)	404.461	0.94%		38.401	2.40%	
Storage (Duration 5h)	189.734	0.44%		0.000	0.00%	
Storage (Duration 6h)	31.272	0.07%		0.000	0.00%	
Storage (Duration 8h)	239.975	0.56%		0.000	0.00%	
Storage (Duration 8.5h)	14.897	0.03%		6.820	0.43%	
Storage (Duration 9h)	0.000	0.00%		0.000	0.00%	
Storage (Duration 12h)	0.000	0.00%		0.000	0.00%	
<b>Pre-Refurbishment CMU</b>	<b>1,546.151</b>	<b>3.59%</b>	<b>3</b>	<b>727.145</b>	<b>45.41%</b>	<b>1</b>
<b>Refurbishing Generating CMU</b>	<b>1,382.010</b>	<b>3.21%</b>	<b>4</b>	<b>0.000</b>	<b>0.00%</b>	<b>0</b>
<b>Existing Interconnector CMU</b>	<b>6,560.960</b>	<b>15.24%</b>	<b>9</b>	<b>0.000</b>	<b>0.00%</b>	<b>0</b>
<b>New Build Interconnector CMU</b>	<b>272.160</b>	<b>0.63%</b>	<b>1</b>	<b>0.000</b>	<b>0.00%</b>	<b>0</b>
<b>Proven DSR CMU</b>	<b>309.911</b>	<b>0.72%</b>	<b>44</b>	<b>0.000</b>	<b>0.00%</b>	<b>0</b>
<b>Unproven DSR CMU</b>	<b>1,457.960</b>	<b>3.39%</b>	<b>126</b>	<b>162.047</b>	<b>10.12%</b>	<b>17</b>

Table 3: Auction Results by Technology Type



The maximum duration for Capacity Agreement received in the T-4 Auction is 15 years. The capacity procured for the period of 2016 to 2042 is shown below, by Auction.

Capacity procured by Delivery Year																						
Delivery Year	T-4 18/19	T-4 19/20	T-4 20/21	TR 16/17	EA & TA 17/18	T1 18/19	T-4 21/22	T-1 19/20	T-3 22/23	T-1 20/21	T-4 23/24	T-1 21/22	T-4 24/25	T-1 22/23	T-4 25/26	T-1 23/24	T-4 26/27	T-1 24/25	T-4 27/28	T-1 25/26	T-4 28/29	Total
2016	-	-	-	620.347	-	-	-	-	-	-	-	-	-	-	-	-	-	-	-	-	-	620.347
2017	-	-	-	-	54,709.962	-	-	-	-	-	-	-	-	-	-	-	-	-	-	-	-	54,709.962
2018	47,523.426	-	-	-	-	5,728.133	-	-	-	-	-	-	-	-	-	-	-	-	-	-	-	53,251.559
2019	760.296	46,223.928	-	-	-	-	-	3,626.196	-	-	-	-	-	-	-	-	-	-	-	-	-	50,610.420
2020	760.296	870.737	52,397.564	-	-	-	-	-	-	1,024.409	-	-	-	-	-	-	-	-	-	-	-	55,053.006
2021	741.574	870.737	2,640.509	-	-	50,416.609	-	-	-	-	-	2,252.116	-	-	-	-	-	-	-	-	-	56,921.545
2022	741.574	870.737	2,640.509	-	-	659.184	-	-	45,058.832	-	-	-	-	4,996.224	-	-	-	-	-	-	-	54,967.060
2023	741.574	870.737	2,640.509	-	-	659.184	-	-	214.984	-	43,748.988	-	-	-	-	5,782.777	-	-	-	-	-	54,658.753
2024	741.574	870.737	2,640.509	-	-	651.969	-	-	214.984	-	1,626.577	-	40,819.895	-	-	-	7,639.609	-	-	-	-	55,205.854
2025	741.574	870.737	2,640.509	-	-	651.240	-	-	212.083	-	1,626.577	-	1,602.062	-	42,364.314	-	-	-	7,936.289	-	-	58,645.385
2026	741.574	870.737	2,640.509	-	-	651.240	-	-	212.083	-	1,623.728	-	1,602.062	-	1,989.359	-	43,000.955	-	-	-	-	53,332.247
2027	741.574	870.737	2,640.509	-	-	651.240	-	-	212.083	-	1,623.728	-	1,602.062	-	1,989.359	-	3,444.623	-	42,830.829	-	-	56,606.744
2028	741.574	870.737	2,640.509	-	-	651.240	-	-	212.083	-	1,614.718	-	1,602.062	-	1,969.494	-	3,444.623	-	1,824.272	-	43,055.073	58,626.385
2029	741.574	870.737	2,640.509	-	-	651.240	-	-	212.083	-	1,614.718	-	1,602.062	-	1,964.494	-	3,436.825	-	1,824.272	-	3,533.134	19,091.648
2030	741.574	870.737	2,640.509	-	-	651.240	-	-	212.083	-	1,614.718	-	1,602.062	-	1,964.673	-	3,436.825	-	1,824.272	-	3,533.134	19,091.827
2031	741.574	870.737	2,640.509	-	-	651.240	-	-	212.083	-	1,614.718	-	1,602.062	-	1,964.673	-	3,436.825	-	1,824.272	-	3,525.805	19,084.498
2032	709.282	870.737	2,607.112	-	-	651.240	-	-	212.083	-	1,614.718	-	1,602.062	-	1,964.673	-	3,423.234	-	1,824.272	-	3,525.805	19,005.218
2033	-	857.817	2,607.112	-	-	649.630	-	-	212.083	-	1,614.718	-	1,602.062	-	1,962.182	-	3,414.966	-	1,821.982	-	3,525.805	18,268.357
2034	-	-	2,607.112	-	-	649.630	-	-	208.114	-	1,614.718	-	1,602.062	-	1,962.182	-	3,414.966	-	1,821.982	-	3,522.579	17,403.345
2035	-	-	-	-	-	641.488	-	-	208.114	-	1,614.718	-	1,599.069	-	1,958.954	-	3,414.966	-	1,821.982	-	3,458.737	14,718.028
2036	-	-	-	-	-	-	-	-	208.114	-	1,614.718	-	1,596.076	-	1,958.954	-	3,414.966	-	1,821.982	-	3,458.737	14,073.547
2037	-	-	-	-	-	-	-	-	-	-	1,614.718	-	1,596.076	-	1,958.045	-	3,414.966	-	1,821.982	-	3,458.737	13,864.524
2038	-	-	-	-	-	-	-	-	-	-	-	-	1,596.076	-	1,958.045	-	3,412.623	-	1,821.982	-	3,457.482	12,246.208
2039	-	-	-	-	-	-	-	-	-	-	-	-	-	-	1,958.045	-	3,412.623	-	1,821.982	-	3,457.482	10,650.132
2040	-	-	-	-	-	-	-	-	-	-	-	-	-	-	-	-	3,412.623	-	1,821.982	-	3,457.482	8,692.087
2041	-	-	-	-	-	-	-	-	-	-	-	-	-	-	-	-	-	-	1,821.982	-	3,457.482	5,279.464
2042	-	-	-	-	-	-	-	-	-	-	-	-	-	-	-	-	-	-	-	-	3,457.482	3,457.482



Appendix A for T-4 Auction (Delivery Year 2028/29)

Parent Company	Applicant Company	CMU ID	Capacity	AG CMU Classification	Capacity (MW)	Duration (Years)	Fuel Type
Abbey Properties Cambridgeshire Limited	CHATTERLEY ENERGY STORAGE LIMITED	CHAT28	Yes	New Build Generating CMU	10.449	15	Storage - Battery
Advica Holdings Limited	Knypersley Power Limited	KPL001	Yes	New Build Generating CMU	6.556	15	Gas
AGR Power Limited	WATTS FARM SOLAR LIMITED	FENGEN	No	Unproven DSR CMU	1.047	15	DSR
AGR Power Limited	WATTS FARM SOLAR LIMITED	FENGH2	No	New Build Generating CMU	5.412	15	Gas
AGR Solar Midco Limited	AGR SOLAR 4 LIMITED	WYBESS	Yes	New Build Generating CMU	6.282	15	Storage - Battery
AIK2A Sustainable Energy (Holdings) LTD	AIK2A SUSTAINABLE ENERGY LTD	AK2a01	Yes	Existing Generating CMU	5.425	1	Onshore Wind
ALCEMI STORAGE DEVELOPMENTS LIMITED	ALCEMI STORAGE DEVELOPMENTS 3 LIMITED	DEVSUP	Yes	New Build Generating CMU	15.659	7	Storage - Battery
ALCEMI STORAGE DEVELOPMENTS LIMITED	ALCEMI STORAGE DEVELOPMENTS 6 LIMITED	CO2SUP	Yes	New Build Generating CMU	15.659	7	Storage - Battery
Alkane Energy Limited	ALKANE ENERGY UK LIMITED	ARAR24	Yes	Existing Generating CMU	3.066	1	Gas
Alkane Energy Limited	ALKANE ENERGY UK LIMITED	AVAV24	Yes	Existing Generating CMU	1.841	1	Gas
Alkane Energy Limited	ALKANE ENERGY UK LIMITED	DOGS24	Yes	Existing Generating CMU	3.805	1	Gas
Alkane Energy Limited	ALKANE ENERGY UK LIMITED	GRIM24	Yes	Existing Generating CMU	5.177	1	Gas
Alkane Energy Limited	ALKANE ENERGY UK LIMITED	HEMH24	Yes	Existing Generating CMU	3.541	1	Gas
Alkane Energy Limited	ALKANE ENERGY UK LIMITED	HOUT24	Yes	Existing Generating CMU	5.078	1	Gas
Alkane Energy Limited	ALKANE ENERGY UK LIMITED	MANV24	Yes	Existing Generating CMU	2.569	1	Gas
Alkane Energy Limited	ALKANE ENERGY UK LIMITED	MARK24	Yes	Existing Generating CMU	1.998	1	Gas
Alkane Energy Limited	ALKANE ENERGY UK LIMITED	REDD24	Yes	New Build Generating CMU	21.031	15	Gas
Alkane Energy Limited	ALKANE ENERGY UK LIMITED	RHYM24	Yes	Existing Generating CMU	6.778	1	Gas
Alkane Energy Limited	ALKANE ENERGY UK LIMITED	SHRB24	Yes	Existing Generating CMU	8.019	1	Gas
Alkane Energy Limited	ALKANE ENERGY UK LIMITED	WHEL24	Yes	Existing Generating CMU	6.022	1	Gas
Alkane Energy Limited	ALKANE ENERGY UK LIMITED	WHIW24	Yes	Existing Generating CMU	2.076	1	Gas
Alkane Energy Limited	REGENT PARK ENERGY LIMITED	LING24	Yes	Existing Generating CMU	0.328	1	Solar
AMP Biomass FinCo Limited	AMPIL 2 ASSET LIMITED	VILLA3	Yes	Existing Generating CMU	2.708	1	Gas
Anesco Limited	CHAPEL LANE ENERGY STORAGE LIMITED	CHALA2	Yes	New Build Generating CMU	8.795	15	Storage - Battery
ASE UK Holdings Limited	ATHRIE NET ZERO LIMITED	ANZL02	Yes	New Build Generating CMU	4.188	15	Storage - Battery
ASE UK Holdings Limited	LEEMING SOLAR FARM LIMITED	LSFL03	Yes	New Build Generating CMU	3.769	15	Storage - Battery
ASE UK Holdings Limited	NORTHWOOD SOLAR FARM LIMITED	NSFL01	Yes	New Build Generating CMU	0.785	15	Storage - Battery
Associated British Foods plc	BRITISH SUGAR PLC	BSBU25	Yes	Existing Generating CMU	55.335	1	Gas
Associated British Foods plc	BRITISH SUGAR PLC	BSWI25	Yes	Existing Generating CMU	41.837	1	Gas
AW1 Storage Holdings Limited	AW1 ENERGY STORAGE LIMITED	USKAW1	Yes	New Build Generating CMU	20.102	15	Storage - Battery
BALANCE ENERGY 11 LTD	BALANCE ENERGY 11 LTD	IRA28A	Yes	New Build Generating CMU	10.365	15	Storage - Battery
BALANCE ENERGY 11 LTD	BALANCE ENERGY 11 LTD	IRA28B	Yes	New Build Generating CMU	10.365	15	Storage - Battery
BALANCE ENERGY 19 LTD	BALANCE ENERGY 19 LTD	COYL28	Yes	New Build Generating CMU	6.261	15	Storage - Battery
BALANCE ENERGY 6 LTD	BALANCE ENERGY 6 LTD	HINC28	Yes	New Build Generating CMU	10.365	15	Storage - Battery
BALANCE ENERGY 9 LTD	BALANCE ENERGY 9 LTD	ROCB28	Yes	New Build Generating CMU	6.282	15	Storage - Battery
BALANCE POWER PROJECTS LIMITED	BALANCE POWER PROJECTS LIMITED	LARK28	Yes	New Build Generating CMU	20.940	15	Storage - Battery
BALANCE POWER PROJECTS LIMITED	BALANCE POWER PROJECTS LIMITED	ROCH28	Yes	New Build Generating CMU	4.114	15	Gas
BENTHEAD SOLAR LIMITED	BENTHEAD SOLAR LIMITED	Bent00	Yes	New Build Generating CMU	4.709	15	Storage - Battery
BRING ENERGY GROUP LIMITED	BIRMINGHAM DISTRICT ENERGY COMPANY LIMITED	BDEC02	Yes	Existing Generating CMU	1.856	1	Gas
Bring Energy Group Limited	BRING ENERGY LIMITED	BTS001	Yes	Existing Generating CMU	3.467	1	Gas
BRING ENERGY GROUP LIMITED	EAST LONDON ENERGY LIMITED	ELEK01	Yes	Existing Generating CMU	2.561	1	Gas
BRING ENERGY GROUP LIMITED	EAST LONDON ENERGY LIMITED	ELES01	Yes	Existing Generating CMU	5.620	1	Gas
Bring Energy Group Limited	EXCEL DISTRICT ENERGY COMPANY LIMITED	EXC001	Yes	Existing Generating CMU	2.553	1	Gas
BRING ENERGY GROUP LIMITED	LEICESTER DISTRICT ENERGY COMPANY LIMITED	LDEC01	Yes	Existing Generating CMU	4.035	1	Gas
Calon Energy (Severn) Limited	SEVERN POWER LIMITED	24SRF1	Yes	Refurbishing Generating CMU	386.538	1	Gas
Calon Energy (Severn) Limited	SEVERN POWER LIMITED	24SRF2	Yes	Refurbishing Generating CMU	386.538	1	Gas
Cargill UK Holdings Ltd	CARGILL PLC	CarGe8	Yes	Existing Generating CMU	27.006	1	Gas
Centrica plc	CBS ENERGY STORAGE ASSETS UK LIMITED	10RE31	Yes	New Build Generating CMU	9.779	1	Storage - Battery
Centrica plc	CBS ENERGY STORAGE ASSETS UK LIMITED	10REAA	Yes	New Build Generating CMU	7.308	15	Storage - Battery
Centrica plc	CENTRICA BUSINESS SOLUTIONS (GENERATION) LIMITED	10REBA	Yes	Existing Generating CMU	3.684	1	Gas
Centrica plc	CENTRICA BUSINESS SOLUTIONS (GENERATION) LIMITED	10REBE	Yes	Existing Generating CMU	1.141	1	Gas
Cero Generation Holdings UK Limited	BRAMLEY SOLAR LIMITED	BRS001	Yes	New Build Generating CMU	8.989	15	Storage - Battery
Cero Generation Holdings UK Limited	ENSO GREEN HOLDINGS A LIMITED	WSB001	Yes	New Build Generating CMU	18.924	15	Storage - Battery
Cero Generation Holdings UK Limited	ENSO GREEN HOLDINGS P LIMITED	BEHR02	No	New Build Generating CMU	8.989	15	Storage - Battery
Cero Generation Holdings UK Limited	ENSO GREEN HOLDINGS R LIMITED	WAGR02	No	New Build Generating CMU	15.770	15	Storage - Battery
Cero Generation Holdings UK Limited	FLEET GREEN LIMITED	FLEE02	Yes	New Build Generating CMU	7.491	15	Storage - Battery
CI Iv Spring Holdco C Ltd	ALCEMI STORAGE DEVELOPMENTS 4 LIMITED	COAST4	Yes	New Build Generating CMU	15.751	7	Storage - Battery
Conrad (Glyme) Limited	CONRAD (FLITWICK) LIMITED	CDFLW5	Yes	Existing Generating CMU	3.309	1	Storage - Battery
Conrad Energy (Holdings) II Limited	CONRAD (BLETCHLEY) LIMITED	PUG003	Yes	Existing Generating CMU	5.913	1	Gas
Conrad Energy (Holdings) II Limited	CONRAD (LILLYHALL) LIMITED	Lilly6	Yes	Existing Generating CMU	7.012	1	Gas
Conrad Energy (Holdings) II Limited	CONRAD (STEVENAGE A) LIMITED	casw24	Yes	Existing Generating CMU	8.405	1	Gas
Conrad Energy (Holdings) II Limited	CONRAD (STEVENAGE B) LIMITED	Cavrd6	Yes	Existing Generating CMU	7.479	1	Gas
Conrad Energy (Holdings) II Limited	CONRAD ENERGY (DEVELOPMENTS) II LIMITED	CDCHR3	No	New Build Generating CMU	16.828	15	Gas
Conrad Lytham (Holdings) Limited	CONRAD (LYTHAM) LIMITED	amynj3	Yes	Existing Generating CMU	6.544	1	Gas
CORIOLIS ENERGY STORAGE LIMITED	CORIOLIS ENERGY STORAGE LIMITED	Orell	Yes	New Build Generating CMU	11.039	15	Storage - Battery
CORY RIVERSIDE (HOLDINGS) LTD	RIVERSIDE RESOURCE RECOVERY LIMITED	RRRF61	Yes	Existing Generating CMU	68.751	1	Waste
COVENTRY ENERGY STORAGE LIMITED	COVENTRY ENERGY STORAGE LIMITED	Nail28	Yes	New Build Generating CMU	7.869	15	Storage - Battery
Development Storage Investments Group Limited	TEMPLETON BATTERY STORAGE LIMITED	TEMP01	Yes	New Build Generating CMU	5.863	15	Storage - Battery
Drax Hydro Limited	DRAX PUMPED STORAGE LIMITED	24CRU1	Yes	Existing Generating CMU	111.588	1	Storage - Pumped
Drax Hydro Limited	DRAX PUMPED STORAGE LIMITED	24CRU2	Yes	Existing Generating CMU	111.588	1	Storage - Pumped
Drax Hydro Limited	DRAX RIVER HYDRO LIMITED	DX24BN	Yes	Existing Generating CMU	10.010	1	Hydro
Drax Hydro Limited	DRAX RIVER HYDRO LIMITED	DX24CA	Yes	Existing Generating CMU	10.920	1	Hydro
Drax Hydro Limited	DRAX RIVER HYDRO LIMITED	DX24DJ	Yes	Existing Generating CMU	1.470	1	Hydro
Drax Hydro Limited	DRAX RIVER HYDRO LIMITED	DX24EA	Yes	Existing Generating CMU	12.740	1	Hydro
Drax Hydro Limited	DRAX RIVER HYDRO LIMITED	DX24KE	Yes	Existing Generating CMU	21.840	1	Hydro
Drax Hydro Limited	DRAX RIVER HYDRO LIMITED	DX24ST	Yes	Existing Generating CMU	5.824	1	Hydro
Drax Hydro Limited	DRAX RIVER HYDRO LIMITED	DX24TO	Yes	Existing Generating CMU	30.030	1	Hydro
Drax Hydro Limited	DRAX RIVER HYDRO LIMITED	GL24RE	Yes	Refurbishing Generating CMU	21.840	15	Hydro
Drax Smart Generation HoldCo Limited	DRAX POWER LIMITED	DX0924	Yes	Existing Generating CMU	28.811	1	Distillate
Drax Smart Generation HoldCo Limited	DRAX POWER LIMITED	DX1024	Yes	Existing Generating CMU	28.811	1	Distillate
Drax Smart Generation HoldCo Limited	DRAX POWER LIMITED	DX1224	Yes	Existing Generating CMU	28.811	1	Distillate
E.ON UK	E.ON UK BATTERY STORAGE SYSTEMS LIMITED	USK001	Yes	New Build Generating CMU	16.124	15	Storage - Battery
E.ON UK CHP LIMITED	CITIGEN (LONDON) LIMITED	CIT007	Yes	Existing Generating CMU	6.832	1	Gas
E.ON UK PLC	E.ON UK PLC	CEN023	Yes	Existing Generating CMU	1.685	1	Gas
E.ON UK PLC	E.ON UK PLC	CEN024	Yes	Existing Generating CMU	2.772	1	Gas
E.ON UK PLC	E.ON UK PLC	CEN025	Yes	Existing Generating CMU	2.708	1	Gas
E.ON UK PLC	E.ON UK PLC	CEN026	Yes	Existing Generating CMU	1.438	1	Gas
E.ON UK PLC	E.ON UK PLC	CEN028	Yes	Existing Generating CMU	1.334	1	Gas
E.ON UK PLC	E.ON UK PLC	DSR152	Yes	Proven DSR CMU	19.291	1	DSR
E.ON UK PLC	E.ON UK PLC	DSR155	Yes	Proven DSR CMU	3.000	1	DSR
E.ON UK PLC	E.ON UK PLC	DSR156	Yes	Proven DSR CMU	8.000	1	DSR
E.ON UK PLC	E.ON UK PLC	DSR157	Yes	Unproven DSR CMU	2.000	1	DSR
E.ON UK PLC	E.ON UK PLC	GREN02	Yes	Existing Generating CMU	8.390	1	Waste
E.ON UK PLC	E.ON UK PLC	WSCC03	Yes	Existing Generating CMU	0.418	1	Storage - Battery
EDF Energy Holdings Limited	EDF ENERGY NUCLEAR GENERATION LIMITED	SZ1-24	Yes	Existing Generating CMU	463.956	1	Nuclear
EDF Energy Holdings Limited	EDF ENERGY NUCLEAR GENERATION LIMITED	SZ2-24	Yes	Existing Generating CMU	463.956	1	Nuclear
EDF Energy Renewables Limited	ROWAN ONSHORE WINDFARMS LIMITED	BTFE24	Yes	Existing Generating CMU	0.717	1	Onshore Wind
EDF Energy Renewables Limited	ROWAN ONSHORE WINDFARMS LIMITED	CEMS24	Yes	Existing Generating CMU	0.531	1	Onshore Wind
EDF Energy Renewables Limited	ROWAN ONSHORE WINDFARMS LIMITED	LNFN24	Yes	Existing Generating CMU	0.621	1	Onshore Wind
EDF Energy Renewables Limited	ROWAN ONSHORE WINDFARMS LIMITED	WWAY24	Yes	Existing Generating CMU	0.930	1	Onshore Wind
EDF Energy Renewables Limited	STRANOCH WINDFARM LIMITED	STRA24	Yes	New Build Generating CMU	6.773	15	Onshore Wind
EDF Energy Renewables Ltd	DAMSONGREEN ENERGY FARM LIMITED	TYEL24	Yes	New Build Generating CMU	1.188	15	Solar
EGEC Holdings Limited	EARLS GATE ENERGY CENTRE LIMITED	EGECL1	Yes	Existing Generating CMU	14.893	1	Waste
EirGrid plc	EirGrid Interconnector Designated Activity Company	EWIC20	Yes	Existing Interconnector CMU	270.000	1	Interconnector
EL Project Co.3 Ltd	EL (WEST WEYBRIDGE) LIMITED	EL0090	Yes	New Build Generating CMU	11.936	15	Storage - Battery
Elements Green Limited	ELEMENTS GREEN STAYTHORPE BESS LTD	EGSB24	Yes	New Build Generating CMU	75.384	15	Storage - Battery
ENEL X INTERNATIONAL S.R.L.	ENEL X UK LIMITED	U25401	No	Unproven DSR CMU	20.000	1	DSR

Appendix A for T-4 Auction (Delivery Year 2028/29)

Parent Company	Applicant Company	CMU ID	Capacity	AG	CMU Classification	Capacity (MW)	Duration (Years)	Fuel Type
ENEL X INTERNATIONAL S.R.L.	ENEL X UK LIMITED	U25402	No	Unproven DSR	CMU	20,000	1	DSR
ENEL X INTERNATIONAL S.R.L.	ENEL X UK LIMITED	U25403	No	Unproven DSR	CMU	20,000	1	DSR
ENEL X INTERNATIONAL S.R.L.	ENEL X UK LIMITED	U25404	No	Unproven DSR	CMU	20,000	1	DSR
ENEL X INTERNATIONAL S.R.L.	ENEL X UK LIMITED	U25405	Yes	Unproven DSR	CMU	20,000	1	DSR
ENEL X INTERNATIONAL S.R.L.	ENEL X UK LIMITED	U25406	Yes	Unproven DSR	CMU	20,000	1	DSR
ENEL X INTERNATIONAL S.R.L.	ENEL X UK LIMITED	U25407	Yes	Unproven DSR	CMU	20,000	1	DSR
ENEL X INTERNATIONAL S.R.L.	ENEL X UK LIMITED	U25408	Yes	Unproven DSR	CMU	20,000	1	DSR
ENEL X INTERNATIONAL S.R.L.	ENEL X UK LIMITED	U25409	Yes	Unproven DSR	CMU	20,000	1	DSR
ENEL X INTERNATIONAL S.R.L.	ENEL X UK LIMITED	U25410	Yes	Unproven DSR	CMU	20,000	1	DSR
ENEL X INTERNATIONAL S.R.L.	ENEL X UK LIMITED	U25411	Yes	Unproven DSR	CMU	20,000	1	DSR
ENEL X INTERNATIONAL S.R.L.	ENEL X UK LIMITED	U25412	Yes	Unproven DSR	CMU	20,000	1	DSR
ENEL X INTERNATIONAL S.R.L.	ENEL X UK LIMITED	U25413	Yes	Unproven DSR	CMU	20,000	1	DSR
ENEL X INTERNATIONAL S.R.L.	ENEL X UK LIMITED	U25414	Yes	Unproven DSR	CMU	20,000	1	DSR
ENEL X INTERNATIONAL S.R.L.	ENEL X UK LIMITED	U25415	Yes	Unproven DSR	CMU	20,000	1	DSR
ENEL X INTERNATIONAL S.R.L.	ENEL X UK LIMITED	U25416	Yes	Unproven DSR	CMU	20,000	1	DSR
ENEL X INTERNATIONAL S.R.L.	ENEL X UK LIMITED	U25417	Yes	Unproven DSR	CMU	20,000	1	DSR
ENEL X INTERNATIONAL S.R.L.	ENEL X UK LIMITED	U25418	Yes	Unproven DSR	CMU	20,000	1	DSR
ENEL X INTERNATIONAL S.R.L.	ENEL X UK LIMITED	U25419	Yes	Unproven DSR	CMU	20,000	1	DSR
ENEL X INTERNATIONAL S.R.L.	ENEL X UK LIMITED	U25420	Yes	Unproven DSR	CMU	20,000	1	DSR
ENEL X INTERNATIONAL S.R.L.	ENEL X UK LIMITED	U25421	Yes	Unproven DSR	CMU	20,000	1	DSR
ENEL X INTERNATIONAL S.R.L.	ENEL X UK LIMITED	U25422	Yes	Unproven DSR	CMU	20,000	1	DSR
ENEL X INTERNATIONAL S.R.L.	ENEL X UK LIMITED	U25423	Yes	Unproven DSR	CMU	20,000	1	DSR
ENEL X INTERNATIONAL S.R.L.	ENEL X UK LIMITED	U25424	Yes	Unproven DSR	CMU	20,000	1	DSR
ENEL X INTERNATIONAL S.R.L.	ENEL X UK LIMITED	U25425	Yes	Unproven DSR	CMU	20,000	1	DSR
ENEL X INTERNATIONAL S.R.L.	ENEL X UK LIMITED	U25426	Yes	Unproven DSR	CMU	20,000	1	DSR
ENEL X INTERNATIONAL S.R.L.	ENEL X UK LIMITED	U25427	Yes	Unproven DSR	CMU	20,000	1	DSR
ENEL X INTERNATIONAL S.R.L.	ENEL X UK LIMITED	U25428	Yes	Unproven DSR	CMU	20,000	1	DSR
ENEL X INTERNATIONAL S.R.L.	ENEL X UK LIMITED	U25429	Yes	Unproven DSR	CMU	20,000	1	DSR
ENEL X INTERNATIONAL S.R.L.	ENEL X UK LIMITED	U25430	Yes	Unproven DSR	CMU	20,000	1	DSR
ENFINIUM ENERGY LIMITED	ENFINIUM FERRYBRIDGE 1 LIMITED	F1-28	Yes	Existing Generating	CMU	69,544	1	Waste
ENFINIUM ENERGY LIMITED	ENFINIUM FERRYBRIDGE 2 LIMITED	F2-28	Yes	Existing Generating	CMU	67,783	1	Waste
ENFINIUM ENERGY LIMITED	ENFINIUM KELVIN LIMITED	KL-28	Yes	New Build Generating	CMU	43,927	15	Waste
ENFINIUM ENERGY LIMITED	ENFINIUM SKELTON GRANGE LIMITED	SG-28	Yes	New Build Generating	CMU	39,614	15	Waste
enfinium Parc Adfer Holdings Limited	ENFINIUM PARC ADFER LIMITED	PA-28	Yes	Existing Generating	CMU	15,535	1	Waste
EP UK Investments Ltd	EGGBOROUGH POWER LIMITED	EBAT05	Yes	New Build Generating	CMU	10,470	15	Storage - Battery
EP UK Investments Ltd	EP LANGAGE LIMITED	LAGA28	Yes	Refurbishing Generating	CMU	823,098	15	Gas
EP UK Investments Ltd	EP SHB LIMITED	SHB128	No	Refurbishing Generating	CMU	727,145	15	Gas
EP UK Investments Ltd	EP SHB LIMITED	SHB228	Yes	Refurbishing Generating	CMU	514,322	15	Gas
ESB ASSET DEVELOPMENT UK LIMITED	ESB SOLAR (NORTHERN IRELAND) LIMITED	MLFA-1	Yes	Existing Generating	CMU	0,497	1	Storage - Battery
ESBII UK LIMITED	CARRINGTON POWER LIMITED	CAGT-1	Yes	Existing Generating	CMU	413,823	1	Gas
ESBII UK LIMITED	CARRINGTON POWER LIMITED	CAGT-2	Yes	Existing Generating	CMU	413,823	1	Gas
ESBII UK LIMITED	CORBY POWER LIMITED	CORY02	No	New Build Generating	CMU	308,517	15	Gas
ExxonMobil UK Limited	ESSO PETROLEUM COMPANY LIMITED	EMD244	Yes	Existing Generating	CMU	77,268	1	Gas
ExxonMobil UK Limited	ESSO PETROLEUM COMPANY LIMITED	EMG244	Yes	Existing Generating	CMU	126,551	1	Gas
FCC (E+M) Holdings Limited	FCC (E&M) LIMITED	FCCM33	Yes	Existing Generating	CMU	13,205	1	Waste
FCC Buckinghamshire Holdings Limited	FCC BUCKINGHAMSHIRE LIMITED	FCCBU4	Yes	Existing Generating	CMU	23,944	1	Waste
Fidra Energy Projects Limited	WEST BURTON C LIMITED	24WBC1	Yes	New Build Generating	CMU	52,175	15	Storage - Battery
Fidra Energy Projects Limited	WEST BURTON C LIMITED	24WBC2	Yes	New Build Generating	CMU	52,175	15	Storage - Battery
FIELD HARTMOOR LTD	FIELD HARTMOOR LTD	HART24	Yes	New Build Generating	CMU	35,466	15	Storage - Battery
First Hydro Holdings Company	First Hydro Company	D3_244	Yes	Existing Generating	CMU	279,311	1	Storage - Pumped
First Hydro Holdings Company	First Hydro Company	D4_244	Yes	Existing Generating	CMU	280,210	1	Storage - Pumped
First Hydro Holdings Company	First Hydro Company	D5_244	Yes	Existing Generating	CMU	279,156	1	Storage - Pumped
First Hydro Holdings Company	First Hydro Company	D6_244	Yes	Existing Generating	CMU	282,627	1	Storage - Pumped
Forsa Energy (Beryl Street) Holdings Limited	BERYL STREET GENERATION LIMITED	LEBS24	Yes	New Build Generating	CMU	3,188	15	Storage - Battery
Forsa Energy (Beryl Street) Holdings Limited	BERYL STREET GENERATION LIMITED	PRBS24	Yes	New Build Generating	CMU	3,188	15	Storage - Battery
Forsa Energy Cm Holdings Limited	FISHCROSS GENERATION LIMITED	FINT24	No	New Build Generating	CMU	18,605	15	Gas
Forsa Energy Cm Holdings Limited	FORSA ENERGY (DRUMCROSS) HOLDINGS LIMITED	NORD24	No	New Build Generating	CMU	21,035	15	Gas
Forsa Energy Cm Holdings Limited	FORSA ENERGY (SPANGO) HOLDINGS LIMITED	HMR241	No	New Build Generating	CMU	21,035	15	Gas
Forsa Energy Cm Holdings Limited	FORSA ENERGY (SPANGO) HOLDINGS LIMITED	HMR242	No	New Build Generating	CMU	21,035	15	Gas
Forsa Energy Cm Holdings Limited	FORSA ENERGY (SPANGO) HOLDINGS LIMITED	HMR243	No	New Build Generating	CMU	4,207	15	Gas
Forsa Energy Cm Holdings Limited	MERSEY GENERATION LIMITED	PRO241	No	New Build Generating	CMU	21,035	15	Gas
Forsa Energy Cm Holdings Limited	MERSEY GENERATION LIMITED	PRO242	No	New Build Generating	CMU	21,035	15	Gas
Forsa Energy Cm Holdings Limited	MERSEY GENERATION LIMITED	PRO243	No	New Build Generating	CMU	4,207	15	Gas
Fpc Income & Growth Plc	FPC ELECTRIC LAND LIMITED	EL0086	No	New Build Generating	CMU	5,235	15	Storage - Battery
Fpc Income & Growth Plc	FPC ELECTRIC LAND LIMITED	EL0088	No	New Build Generating	CMU	6,282	15	Storage - Battery
FRV POWERTEK LIMITED	FRV POWERTEK LIMITED	FPL001	Yes	New Build Generating	CMU	8,167	15	Storage - Battery
General Electricity Holdings	KIWI POWER LTD	EDR401	Yes	Unproven DSR	CMU	30,000	1	DSR
General Electricity Holdings	KIWI POWER LTD	EDR402	Yes	Unproven DSR	CMU	30,000	1	DSR
General Electricity Holdings	KIWI POWER LTD	EDR403	Yes	Unproven DSR	CMU	30,000	1	DSR
General Electricity Holdings	KIWI POWER LTD	EDR404	Yes	Unproven DSR	CMU	40,000	1	DSR
General Electricity Holdings	KIWI POWER LTD	EDR405	Yes	Unproven DSR	CMU	30,000	1	DSR
General Electricity Holdings	KIWI POWER LTD	EDR406	Yes	Unproven DSR	CMU	30,000	1	DSR
General Electricity Holdings	KIWI POWER LTD	EDR407	Yes	Unproven DSR	CMU	30,000	1	DSR
General Electricity Holdings	KIWI POWER LTD	EDR408	Yes	Unproven DSR	CMU	60,000	1	DSR
General Electricity Holdings	KIWI POWER LTD	EDR409	Yes	Unproven DSR	CMU	60,000	1	DSR
General Electricity Holdings	KIWI POWER LTD	EDR410	Yes	Unproven DSR	CMU	60,000	1	DSR
Get Elec Limited	ELECLINK LIMITED	ElecL9	Yes	Existing Interconnector	CMU	670,000	1	Interconnector
GF173 LTD	GFI TIMET LTD	TIM002	No	New Build Generating	CMU	18,698	15	Gas
GFP (Holdings) Limited	GF173 LTD	NWA002	No	New Build Generating	CMU	18,698	15	Bio-fuel
GLASS LEAF POWER LIMITED	GLASS LEAF POWER LIMITED	BRAN23	Yes	Existing Generating	CMU	3,116	1	Gas
Gore Street Energy Storage Fund PLC	GSES 1 LIMITED	ADSLS6	Yes	Existing Generating	CMU	1,309	1	Storage - Battery
Gore Street Energy Storage Fund PLC	GSES 1 LIMITED	AGHUL6	Yes	Existing Generating	CMU	1,309	1	Storage - Battery
Gore Street Energy Storage Fund PLC	GSES 1 LIMITED	AGLAR6	Yes	Existing Generating	CMU	1,277	1	Storage - Battery
Gore Street Energy Storage Fund PLC	GSES 1 LIMITED	ANC1B2	Yes	Existing Generating	CMU	0,270	1	Storage - Battery
Gore Street Energy Storage Fund PLC	GSES 1 LIMITED	ANC2B2	Yes	Existing Generating	CMU	0,270	1	Storage - Battery
Gore Street Energy Storage Fund PLC	OSSPV001 LIMITED	GSF006	Yes	Proven DSR	CMU	7,515	1	DSR
GOYT HALL PROJECT COMPANY LTD	GOYT HALL PROJECT COMPANY LTD	GOYT28	Yes	New Build Generating	CMU	8,376	15	Storage - Battery
Green Bess Developments (UK) Limited	ECCLES ENERGY CENTRE LIMITED	EECL24	Yes	New Build Generating	CMU	71,196	15	Storage - Battery
Green Frog Power Limited	GFV-1 LIMITED	IRA001	No	New Build Generating	CMU	8,795	15	Storage - Battery
Green Recovery Projects Limited	FCC ENVIRONMENT (LINCOLNSHIRE) LIMITED	FCCL16	Yes	Existing Generating	CMU	11,532	1	Waste
Greencoat GRI Assets Limited	SG GRI TILN BESS LIMITED	TILN28	Yes	Existing Generating	CMU	4,469	1	Storage - Battery
Greencoat UK Wind Holdco Limited	BRAES OF DOUNE WIND FARM (SCOTLAND) LIMITED	BOD001	Yes	Existing Generating	CMU	4,914	1	Onshore Wind
Greencoat UK Wind Holdco Limited	DOUGLAS WEST WIND FARM LTD	DGWES4	Yes	Existing Generating	CMU	2,988	1	Onshore Wind
Greencoat UK Wind Holdco Limited	NORTH HOYLE WIND FARM LIMITED	NHY001	Yes	Existing Generating	CMU	4,572	1	Offshore Wind
Greencoat UK Wind Holdco Limited	SOUTH KYLE WIND FARM LIMITED	SKYL01	Yes	Existing Generating	CMU	15,604	1	Onshore Wind
Greencoat UK Wind Holdco Limited	TWENTYSHILLING LIMITED	TWESH2	Yes	Existing Generating	CMU	2,510	1	Onshore Wind
Greencoat UK Wind Holdco Limited	WINDY RIG WIND FARM LIMITED	WINDY2	Yes	Existing Generating	CMU	2,842	1	Onshore Wind
Greenlink Interconnector Trading Limited	GREENLINK INTERCONNECTOR LIMITED	GILIC2	Yes	New Build Interconnector	CMU	272,160	1	Interconnector
Greenspan Energy Limited	BOLSHAN RENEWABLES LIMITED	SRHA07	Yes	Existing Generating	CMU	1,047	1	Storage - Battery
Greenspan Energy Limited	GREENSPAN CONTRACTORS LIMITED	ABCN08	Yes	Existing Generating	CMU	3,740	1	Gas
Greenspan Energy Limited	GREENSPAN NIFTY FIFTY LIMITED	WPKA08	Yes	Existing Generating	CMU	3,740	1	Gas
Greenspan Energy Limited	GREENSPAN NIFTY FIFTY LIMITED	WPKB08	Yes	Existing Generating	CMU	3,740	1	Gas
Greenvolt - Energias Renovavies, S.A.	SLIMBRIDGE ENERGY LIMITED	SLIMBR	Yes	New Build Generating	CMU	7,538	15	Storage - Battery
Greenvolt - Energias Renovavies, S.A.	SUTTIESIDE BATTERY LIMITED	SUTTIE	Yes	New Build Generating	CMU	4,356	15	Storage - Battery
GRESHAM HOUSE DEVCO PIPELINE LIMITED	GRESHAM HOUSE DEVCO PIPELINE LIMITED	OCKR01	Yes	New Build Generating	CMU	37,692	15	Storage - Battery
GRESHAM HOUSE DEVCO PIPELINE LIMITED	GRESHAM HOUSE DEVCO PIPELINE LIMITED	OCKR02	Yes	New Build Generating	CMU	10,945	15	Storage - Battery
Gresham House Energy Storage Holdings Ptc	NEVENDON ENERGY STORAGE LTD	NEV25B	Yes	New Build Generating	CMU	1,256	15	Storage - Battery

Appendix A for T-4 Auction (Delivery Year 2028/29)

Parent Company	Applicant Company	CMU ID	Capacity	AG CMU Classification	Capacity (MW)	Duration (Years)	Fuel Type
Gresham House Energy Storage Holdings Plc	UK BATTERY STORAGE LTD	ElaB2	Yes	New Build Generating CMU	15.705	15	Storage - Battery
Grid Shift Limited	BATTERY BOX LIMITED	BT4U13	No	New Build Generating CMU	0.260	15	Storage - Battery
Grid Shift Limited	BATTERY BOX LIMITED	BT4U19	No	New Build Generating CMU	0.310	15	Storage - Battery
Grid Shift Limited	BATTERY BOX LIMITED	BT4U20	No	New Build Generating CMU	0.310	15	Storage - Battery
Grid Shift Limited	BATTERY BOX LIMITED	BT4U25	No	New Build Generating CMU	0.260	15	Storage - Battery
GRIDBEYOND LIMITED	GRIDBEYOND LIMITED	GB2337	Yes	Proven DSR CMU	2.777	1	DSR
GRIDBEYOND LIMITED	GRIDBEYOND LIMITED	GB2401	Yes	Existing Generating CMU	3.729	1	Gas
GRIDBEYOND LIMITED	GRIDBEYOND LIMITED	GB2405	Yes	Existing Generating CMU	3.729	1	Gas
GRIDBEYOND LIMITED	GRIDBEYOND LIMITED	GB2408	Yes	Proven DSR CMU	5.955	1	DSR
GRIDBEYOND LIMITED	GRIDBEYOND LIMITED	GB2412	Yes	Proven DSR CMU	2.261	1	DSR
GRIDBEYOND LIMITED	GRIDBEYOND LIMITED	GB2414	Yes	Existing Generating CMU	1.346	1	Gas
GRIDBEYOND LIMITED	GRIDBEYOND LIMITED	GB2415	Yes	Proven DSR CMU	9.108	1	DSR
GRIDBEYOND LIMITED	GRIDBEYOND LIMITED	GB2416	Yes	Proven DSR CMU	10.069	1	DSR
GRIDBEYOND LIMITED	GRIDBEYOND LIMITED	GB2417	Yes	Proven DSR CMU	5.709	1	DSR
GRIDBEYOND LIMITED	GRIDBEYOND LIMITED	GB2418	Yes	Proven DSR CMU	2.223	1	DSR
GRIDBEYOND LIMITED	GRIDBEYOND LIMITED	GB2434	Yes	Proven DSR CMU	3.305	1	DSR
GRIDBEYOND LIMITED	GRIDBEYOND LIMITED	GB2501	Yes	Existing Generating CMU	1.637	1	Gas
GRIDBEYOND LIMITED	GRIDBEYOND LIMITED	GB2502	Yes	New Build Generating CMU	3.226	6	Gas
GRIDBEYOND LIMITED	GRIDBEYOND LIMITED	GB2506	Yes	New Build Generating CMU	1.255	10	Gas
GRIDBEYOND LIMITED	GRIDBEYOND LIMITED	GB2510	Yes	Existing Generating CMU	2.803	1	Gas
GRIDBEYOND LIMITED	GRIDBEYOND LIMITED	GB2514	Yes	New Build Generating CMU	0.628	15	Storage - Battery
GRIDBEYOND LIMITED	GRIDBEYOND LIMITED	GB2531	Yes	Existing Generating CMU	2.182	1	Gas
GRIDBEYOND LIMITED	GRIDBEYOND LIMITED	GB2532	Yes	Existing Generating CMU	1.364	1	Gas
GRIDBEYOND LIMITED	GRIDBEYOND LIMITED	GB2533	Yes	New Build Generating CMU	2.094	15	Storage - Battery
GRIDBEYOND LIMITED	GRIDBEYOND LIMITED	GBD002	Yes	Proven DSR CMU	3.033	1	DSR
GRIDBEYOND LIMITED	GRIDBEYOND LIMITED	GBD008	Yes	Existing Generating CMU	4.910	1	Gas
GRIDBEYOND LIMITED	GRIDBEYOND LIMITED	GBD009	Yes	Existing Generating CMU	30.965	1	Gas
GRIDBEYOND LIMITED	GRIDBEYOND LIMITED	GBD011	Yes	Existing Generating CMU	2.006	1	Gas
GRIDBEYOND LIMITED	GRIDBEYOND LIMITED	GBD012	Yes	Existing Generating CMU	1.330	1	Gas
GRIDBEYOND LIMITED	GRIDBEYOND LIMITED	GBD013	Yes	Existing Generating CMU	6.463	1	Gas
GRIDBEYOND LIMITED	GRIDBEYOND LIMITED	GBD014	Yes	Proven DSR CMU	3.104	1	DSR
GRIDBEYOND LIMITED	GRIDBEYOND LIMITED	GBD020	Yes	Existing Generating CMU	14.152	1	Gas
GRIDBEYOND LIMITED	GRIDBEYOND LIMITED	GBD023	Yes	Proven DSR CMU	25.974	1	DSR
GRIDBEYOND LIMITED	GRIDBEYOND LIMITED	GBD024	Yes	Proven DSR CMU	5.918	1	DSR
GRIDBEYOND LIMITED	GRIDBEYOND LIMITED	GBD025	Yes	Proven DSR CMU	7.663	1	DSR
GRIDBEYOND LIMITED	GRIDBEYOND LIMITED	GBD026	Yes	Proven DSR CMU	5.714	1	DSR
GRIDBEYOND LIMITED	GRIDBEYOND LIMITED	GBD027	Yes	Proven DSR CMU	4.014	1	DSR
GRIDBEYOND LIMITED	GRIDBEYOND LIMITED	GBD028	Yes	Proven DSR CMU	6.979	1	DSR
GRIDBEYOND LIMITED	GRIDBEYOND LIMITED	GBD029	Yes	Proven DSR CMU	5.468	1	DSR
GRIDBEYOND LIMITED	GRIDBEYOND LIMITED	GBD030	Yes	Proven DSR CMU	7.268	1	DSR
GRIDBEYOND LIMITED	GRIDBEYOND LIMITED	GBD031	Yes	Proven DSR CMU	6.156	1	DSR
GRIDBEYOND LIMITED	GRIDBEYOND LIMITED	GBD032	Yes	Proven DSR CMU	3.263	1	DSR
GRIDBEYOND LIMITED	GRIDBEYOND LIMITED	GBD033	Yes	Proven DSR CMU	5.799	1	DSR
GRIDBEYOND LIMITED	GRIDBEYOND LIMITED	GBD035	Yes	Proven DSR CMU	3.628	1	DSR
GRIDBEYOND LIMITED	GRIDBEYOND LIMITED	GBD038	Yes	Existing Generating CMU	9.450	1	Gas
GRIDBEYOND LIMITED	GRIDBEYOND LIMITED	GBD039	Yes	Proven DSR CMU	2.518	1	DSR
GRIDBEYOND LIMITED	GRIDBEYOND LIMITED	GBD040	Yes	Proven DSR CMU	3.093	1	DSR
GRIDBEYOND LIMITED	GRIDBEYOND LIMITED	GBD044	Yes	Proven DSR CMU	25.870	1	DSR
GRIDBEYOND LIMITED	GRIDBEYOND LIMITED	GBD045	Yes	Proven DSR CMU	8.345	1	DSR
GRIDBEYOND LIMITED	GRIDBEYOND LIMITED	GX2502	Yes	Unproven DSR CMU	2.100	1	DSR
GRIDBEYOND LIMITED	GRIDBEYOND LIMITED	GX2503	Yes	Unproven DSR CMU	5.000	1	DSR
GRIDBEYOND LIMITED	GRIDBEYOND LIMITED	GX2504	Yes	Unproven DSR CMU	9.000	1	DSR
GRIDBEYOND LIMITED	GRIDBEYOND LIMITED	GX2507	Yes	Unproven DSR CMU	2.000	1	DSR
GRIDBEYOND LIMITED	GRIDBEYOND LIMITED	GX2508	Yes	Unproven DSR CMU	4.000	1	DSR
GRIDBEYOND LIMITED	GRIDBEYOND LIMITED	GX2509	Yes	Unproven DSR CMU	8.000	1	DSR
GRIDBEYOND LIMITED	GRIDBEYOND LIMITED	GX2510	Yes	Unproven DSR CMU	14.200	1	DSR
GRIDBEYOND LIMITED	GRIDBEYOND LIMITED	GXB014	Yes	Unproven DSR CMU	5.751	1	DSR
GRIDBEYOND LIMITED	GRIDBEYOND LIMITED	GXD004	Yes	Unproven DSR CMU	5.096	1	DSR
GRIDBEYOND LIMITED	GRIDBEYOND LIMITED	GXD010	Yes	Unproven DSR CMU	4.617	1	DSR
GRIDBEYOND LIMITED	GRIDBEYOND LIMITED	GXD022	Yes	Unproven DSR CMU	1.819	1	DSR
GRIDBEYOND LIMITED	GRIDBEYOND LIMITED	GXD048	Yes	Unproven DSR CMU	1.162	1	DSR
HARMONY FW LIMITED	HARMONY FW LIMITED	HFWL28	Yes	New Build Generating CMU	7.748	15	Storage - Battery
HARMONY ST LIMITED	HARMONY ST LIMITED	HSTL28	Yes	New Build Generating CMU	7.748	15	Storage - Battery
Hero Future Energies UK Limited	CLEAN BATTERY POWER UK 1 LIMITED	CMU-01	Yes	New Build Generating CMU	1.047	15	Storage - Battery
Hero Future Energies UK Limited	CLEAN BATTERY POWER UK 1 LIMITED	CMU-02	Yes	New Build Generating CMU	1.047	15	Storage - Battery
Highview Enterprises Ltd	CRYOBATTERY ONE LIMITED	Cry002	Yes	New Build Generating CMU	31.272	15	Storage - Compres
Hollybush BESS Ltd	Hollybush BESS Ltd	LANDO1	Yes	New Build Generating CMU	7.931	15	Storage - Battery
Indaver Rivenhall Holdings Limited	INDAVER RIVENHALL LIMITED	RIVE24	Yes	New Build Generating CMU	48.417	15	Waste
Inovyn Limited	INOYVN CHLORVINYLS LIMITED	INO101	Yes	Existing Generating CMU	8.779	1	Gas
Inovyn Limited	INOYVN CHLORVINYLS LIMITED	INO201	Yes	Proven DSR CMU	28.713	1	DSR
Inovyn Limited	INOYVN CHLORVINYLS LIMITED	VID201	Yes	Existing Generating CMU	38.733	1	Waste
INTEGRUM RENEWABLE ENERGY LTD	CAMBLESFORTH SOLAR FARM LIMITED	CMBFBS	Yes	New Build Generating CMU	1.566	15	Storage - Battery
INTERGEN POWER LTD	CORYTON ENERGY COMPANY, LTD.	IGCE24	Yes	Existing Generating CMU	727.600	1	Gas
INTERGEN POWER LTD	ROCKSAVAGE POWER COMPANY, LTD.	IGRK24	Yes	Existing Generating CMU	736.695	1	Gas
INTERGEN POWER LTD	SPALDING ENERGY COMPANY, LTD.	IGSP24	Yes	Existing Generating CMU	864.025	1	Gas
Kent Energy Limited	KENT ENVIROPOWER LIMITED	FCAL31	Yes	Existing Generating CMU	35.212	1	Waste
Kona Energy Limited	KONA ASSET 3 LIMITED	KA3SMT	Yes	New Build Generating CMU	35.179	15	Storage - Battery
Lakeside Energy From Waste Holdings Ltd	LAKE SIDE ENERGY FROM WASTE LIMITED	Lake28	Yes	Existing Generating CMU	32.010	1	Waste
LOWER 48 ENERGY BESS LTD	LOWER 48 BARTON BESS LTD	LoBA24	Yes	New Build Generating CMU	9.423	15	Storage - Battery
MERCIA POWER LIMITED	FRP MERCIA HOLDCO 2 LIMITED	2HA244	Yes	New Build Generating CMU	1.869	15	Gas
MERCIA POWER LIMITED	FRP MERCIA HOLDCO 2 LIMITED	2SO244	Yes	New Build Generating CMU	0.934	15	Gas
MERCIA POWER LIMITED	FRP MERCIA HOLDCO 2 LIMITED	F2GE24	Yes	Existing Generating CMU	4.675	1	Gas
MERCIA POWER LIMITED	FRP MERCIA HOLDCO LIMITED	ASMUS5	Yes	Existing Generating CMU	7.479	1	Gas
MERCIA POWER LIMITED	FRP MERCIA HOLDCO LIMITED	DRPKR5	Yes	Existing Generating CMU	3.740	1	Gas
MOYLE INTERCONNECTOR (FINANCING) PUBLIC LIMITED COMPANY	MOYLE INTERCONNECTOR LIMITED	Moyle9	Yes	Existing Interconnector CMU	270.000	1	Interconnector
NADARA LIMITED	ARDROSSAN WIND FARM (SCOTLAND) LIMITED	ArdWF1	Yes	Existing Generating CMU	1.985	1	Onshore Wind
NADARA LIMITED	BEAUFORT WIND LIMITED	LmRWF1	Yes	Existing Generating CMU	0.517	1	Onshore Wind
NADARA LIMITED	BEAUFORT WIND LIMITED	LnAWF1	Yes	Existing Generating CMU	1.377	1	Onshore Wind
NADARA LIMITED	CAMBRIAN WIND ENERGY LIMITED	CAMWF1	Yes	Existing Generating CMU	3.884	1	Onshore Wind
NADARA LIMITED	CAUSEMIRE WINDFARM LIMITED	CauWF2	Yes	Existing Generating CMU	3.207	1	Onshore Wind
NADARA LIMITED	DALSWINTON WINDFARM (SCOTLAND) LIMITED	DlsWF1	Yes	Existing Generating CMU	1.992	1	Onshore Wind
NADARA LIMITED	EARLSBURN WIND ENERGY LIMITED	EARWF1	Yes	Existing Generating CMU	2.444	1	Onshore Wind
NADARA LIMITED	FARR WINDFARM LIMITED	FarWF1	Yes	Existing Generating CMU	6.108	1	Onshore Wind
NADARA LIMITED	FFYNNON OER WINDFARM LIMITED	FIOWF2	Yes	Existing Generating CMU	2.126	1	Onshore Wind
NADARA LIMITED	MINSKA WINDFARM (SCOTLAND) LIMITED	MinWF1	Yes	Existing Generating CMU	2.444	1	Onshore Wind
NADARA LIMITED	MYNYDD CLOGAU WINDFARM LIMITED	MyCWF1	Yes	Existing Generating CMU	0.963	1	Onshore Wind
National Grid Holdings One plc	NATIONAL GRID INTERCONNECTORS LIMITED	IFA_24	Yes	Existing Interconnector CMU	1,232.560	1	Interconnector
NATIONAL GRID INTERCONNECTOR HOLDINGS LIMITED	BRITNED DEVELOPMENT LIMITED	Brit24	Yes	Existing Interconnector CMU	792.000	1	Interconnector
National Grid Interconnector Holdings Limited	NATIONAL GRID IFA 2 LIMITED	IFA224	Yes	Existing Interconnector CMU	693.000	1	Interconnector
National Grid Interconnector Holdings Limited	NATIONAL GRID NORTH SEA LINK LIMITED	NSL_24	Yes	Existing Interconnector CMU	1,050.000	1	Interconnector
National Grid Interconnector Holdings Limited	NATIONAL GRID VIKING LINK LIMITED	VIK_24	Yes	Existing Interconnector CMU	900.000	1	Interconnector
National Grid Interconnector Holdings Limited	NEMO LINK LIMITED	NEMO24	Yes	Existing Interconnector CMU	683.400	1	Interconnector
New Road Solar Ltd	MAUXHALL FARM ENERGY PARK LIMITED	MAUX12	Yes	New Build Generating CMU	3.242	15	Storage - Battery
NEW THURCROFT ENERGY STORAGE LTD	NEW THURCROFT ENERGY STORAGE LTD	THURC2	No	New Build Generating CMU	17.799	15	Storage - Battery
NEWBURN HAUGH POWER LIMITED	NEWBURN HAUGH POWER LIMITED	NEWB28	Yes	New Build Generating CMU	10.449	15	Storage - Battery
NextEnergy Solar Holdings III Limited	NEXTPOWER BOSWORTH LIMITED	NESF05	Yes	Existing Generating CMU	0.310	1	Solar
NextEnergySolar Holdings III Ltd	LITTLE STAUGHTON AIRFIELD SOLAR LIMITED	NESF01	Yes	Existing Generating CMU	2.488	1	Solar



Appendix A for T-4 Auction (Delivery Year 2028/29)

Parent Company	Applicant Company	CMU ID	Capacity	AG CMU Classification	Capacity (MW)	Duration (Years)	Fuel Type
NextEnergySolar Holdings III Ltd	NEXTPOWER HIGH GARRETT LIMITED	NESF04	Yes	Existing Generating CMU	0.366	1	Solar
Nextpower UK Holdco Limited	GWENT FARMERS' COMMUNITY SOLAR PARTNERSHIP LIMITED	NPUK01	Yes	Existing Generating CMU	3.120	1	Solar
Nextpower UK Holdco Limited	NEXTPOWER BINDWELL LIMITED	NPUK02	Yes	New Build Generating CMU	0.559	15	Solar
Nextpower UK Holdco Limited	NEXTPOWER LOWER STRENSHAM LIMITED	NPUK03	Yes	Existing Generating CMU	1.556	1	Solar
Northumberland Energy Recovery Holdings Ltd	NORTHUMBERLAND ENERGY RECOVERY LTD	SUEZ23	Yes	Existing Generating CMU	9.279	1	Waste
Nuclear Decommissioning Authority	Nuclear Decommissioning Authority	NDAMAN	Yes	Existing Generating CMU	27.300	1	Hydro
Nursling Energy Limited	NURSING ENERGY TWO LIMITED	Nurse6	Yes	Existing Generating CMU	0.628	1	Storage - Battery
Octopus Energy Group Limited	OCTOPUS ENERGY LIMITED	OCTE31	Yes	Unproven DSR CMU	39.935	1	DSR
Octopus Energy Group Limited	OCTOPUS ENERGY LIMITED	OCTE32	Yes	Unproven DSR CMU	39.935	1	DSR
Octopus Energy Group Limited	OCTOPUS ENERGY LIMITED	OCTE33	Yes	Unproven DSR CMU	39.935	1	DSR
Octopus Energy Group Limited	OCTOPUS ENERGY LIMITED	OCTE42	Yes	Unproven DSR CMU	20.000	1	DSR
Octopus Energy Group Limited	OCTOPUS ENERGY LIMITED	OCTE43	Yes	Unproven DSR CMU	20.000	1	DSR
Octopus Energy Group Limited	OCTOPUS ENERGY LIMITED	OCTE44	Yes	Unproven DSR CMU	20.000	1	DSR
Octopus Energy Group Limited	OCTOPUS ENERGY LIMITED	OCTE46	Yes	Unproven DSR CMU	20.000	1	DSR
Octopus Energy Group Limited	OCTOPUS ENERGY LIMITED	OCTE47	Yes	Unproven DSR CMU	20.000	1	DSR
Octopus Energy Group Limited	OCTOPUS ENERGY LIMITED	OCTE48	Yes	Unproven DSR CMU	20.000	1	DSR
Octopus Energy Group Limited	OCTOPUS ENERGY LIMITED	OCTE49	Yes	Unproven DSR CMU	20.000	1	DSR
Octopus Energy Group Limited	OCTOPUS ENERGY LIMITED	OCTE58	Yes	Unproven DSR CMU	6.500	1	DSR
Octopus Energy Group Limited	OCTOPUS ENERGY LIMITED	OCTE72	Yes	Unproven DSR CMU	3.729	1	DSR
Octopus Energy Group Limited	OCTOPUS ENERGY LIMITED	OCTE76	Yes	Unproven DSR CMU	1.000	1	DSR
OnPath Energy Limited	COMMON FARM SOLAR PARK LIMITED	CFBESS	Yes	New Build Generating CMU	6.863	15	Storage - Battery
OnPath Energy Limited	COMMON FARM SOLAR PARK LIMITED	CFSPV1	Yes	New Build Generating CMU	2.636	15	Solar
OnPath Energy Limited	MILL RIG WIND FARM LLP	MRIGWF	Yes	New Build Generating CMU	2.218	15	Onshore Wind
P3P ASSET HOLDINGS LIMITED	THE ISLE OF WIGHT ENERGY COMPANY LIMITED	IWHALI	Yes	Unproven DSR CMU	1.469	1	DSR
P3P ASSET HOLDINGS LIMITED	THE ISLE OF WIGHT ENERGY COMPANY LIMITED	IWTSLI	Yes	Unproven DSR CMU	2.551	1	DSR
P3P BREHON LIMITED	P3P BREHON LIMITED	BREH23	Yes	Existing Generating CMU	14.024	1	Gas
P3P PARTNERS LLP	P3P ENERGY MANAGEMENT AE LIMITED	CASQ23	Yes	Existing Generating CMU	3.080	1	Gas
P3P Teesside Holdings Limited	SPARK STEAM LIMITED	TEES23	Yes	Existing Generating CMU	6.167	1	Gas
Palm Paper Limited	Palm Paper Limited	PPKL02	Yes	Existing Generating CMU	42.504	1	Gas
Palm Paper Limited	Palm Paper Limited	PPKL03	Yes	Unproven DSR CMU	8.546	1	DSR
PAPREC UK LIMITED	PAPREC ENERGIES BINN LIMITED	PEBL01	Yes	New Build Generating CMU	6.866	15	Waste
Peak Gen Top Co Limited	PEAK GEN POWER LIMITED	COV-24	Yes	Existing Generating CMU	5.609	1	Diesel
Peak Gen Top Co Limited	PEAK GEN POWER LIMITED	DID-24	Yes	Existing Generating CMU	3.085	1	Diesel
Peak Gen Top Co Limited	PEAK GEN POWER LIMITED	HAT-24	Yes	Existing Generating CMU	5.311	1	Diesel
Peak Gen Top Co Limited	PEAK GEN POWER LIMITED	HAY-24	Yes	Existing Generating CMU	5.265	1	Diesel
Peak Gen Top Co Limited	W4B RENEWABLE ENERGY LIMITED	W42024	Yes	Existing Generating CMU	18.454	1	Diesel
Pelagic Energy Development Ltd	HB411MIN LTD	DOGT28	Yes	New Build Generating CMU	39.648	15	Storage - Battery
Pelagic Energy Development Ltd	HD000ACT LTD	FRHL28	Yes	New Build Generating CMU	24.862	15	Storage - Battery
Pelagic Energy Development Ltd	KIRKBY BATTERY STORAGE LTD	MIN28B	Yes	New Build Generating CMU	24.862	15	Storage - Battery
Pelagic Energy Development Ltd	PD688IRO LTD	PHL28A	Yes	New Build Generating CMU	24.862	15	Storage - Battery
Pelagic Energy Development Ltd	PD688IRO LTD	PHL28B	Yes	New Build Generating CMU	39.648	15	Storage - Battery
Pelagic Energy Development Ltd	PD688IRO LTD	SMD28	Yes	New Build Generating CMU	39.648	15	Storage - Battery
Pelagic Energy Development Ltd	PD688IRO LTD	STF28A	Yes	New Build Generating CMU	39.648	15	Storage - Battery
Pelagic Energy Development Ltd	PD688IRO LTD	STF28B	Yes	New Build Generating CMU	39.648	15	Storage - Battery
Pivot Power (Holding) Limited	PIVOTED POWER LLP	PPCW24	Yes	Existing Generating CMU	4.007	1	Storage - Battery
Pivot Power (Holding) Limited	PIVOTED POWER LLP	PPKM24	Yes	Existing Generating CMU	4.007	1	Storage - Battery
Pivot Power (Holding) Limited	PIVOTED POWER LLP	PLLD24	Yes	New Build Generating CMU	8.034	15	Storage - Battery
Pivot Power (Holding) Limited	PIVOTED POWER LLP	PPMN24	No	New Build Generating CMU	6.820	15	Storage - Battery
PRII ENERGY LIMITED	PRII ENERGY LIMITED	PRIO1	Yes	Unproven DSR CMU	2.000	15	DSR
PRII ENERGY LIMITED	PRII ENERGY LIMITED	PRIO2	Yes	Unproven DSR CMU	2.000	15	DSR
Pulse Clean Energy Ltd	PULSE CLEAN ENERGY SPV ANDERSON LIMITED	RC4202	No	New Build Generating CMU	19.055	15	Storage - Battery
Pulse Clean Energy Ltd	PULSE CLEAN ENERGY SPV JOHNSON 1 LTD	PN1424	Yes	New Build Generating CMU	9.592	1	Storage - Battery
Pulse Clean Energy Ltd	PULSE CLEAN ENERGY SPV JOHNSON 2 LTD	PN2424	No	New Build Generating CMU	9.592	15	Storage - Battery
Pulse Clean Energy Ltd	PULSE CLEAN ENERGY SPV JOHNSON 3 LTD	PN3424	Yes	New Build Generating CMU	5.575	1	Storage - Battery
Q4 Holdings Limited	24 POWER LTD	BRWE24	Yes	New Build Generating CMU	20.940	15	Storage - Battery
RES UK & Ireland	CORSELLACH ENERGY STORAGE LIMITED	24COR4	Yes	New Build Generating CMU	7.413	15	Storage - Battery
RESERVE POWER HOLDINGS (JERSEY) LIMITED	FLEXITRICITY LIMITED	F19003	Yes	Existing Generating CMU	4.729	1	Gas
RESERVE POWER HOLDINGS (JERSEY) LIMITED	FLEXITRICITY LIMITED	F19004	Yes	Existing Generating CMU	5.960	1	Gas
RESERVE POWER HOLDINGS (JERSEY) LIMITED	FLEXITRICITY LIMITED	F19019	Yes	Existing Generating CMU	2.974	1	Gas
RESERVE POWER HOLDINGS (JERSEY) LIMITED	FLEXITRICITY LIMITED	F19029	No	Existing Generating CMU	5.821	1	Gas
RESERVE POWER HOLDINGS (JERSEY) LIMITED	FLEXITRICITY LIMITED	F19039	No	Existing Generating CMU	8.731	1	Gas
RESERVE POWER HOLDINGS (JERSEY) LIMITED	FLEXITRICITY LIMITED	F20002	Yes	Existing Generating CMU	5.821	1	Gas
RESERVE POWER HOLDINGS (JERSEY) LIMITED	FLEXITRICITY LIMITED	F20030	Yes	Existing Generating CMU	2.274	1	Gas
RESERVE POWER HOLDINGS (JERSEY) LIMITED	FLEXITRICITY LIMITED	F20111	Yes	Existing Generating CMU	6.819	1	Gas
RESERVE POWER HOLDINGS (JERSEY) LIMITED	FLEXITRICITY LIMITED	F21018	Yes	Existing Generating CMU	1.728	1	Gas
RESERVE POWER HOLDINGS (JERSEY) LIMITED	FLEXITRICITY LIMITED	F21144	Yes	Existing Generating CMU	0.910	1	Gas
RESERVE POWER HOLDINGS (JERSEY) LIMITED	FLEXITRICITY LIMITED	F23025	No	Existing Generating CMU	12.451	1	Gas
RESERVE POWER HOLDINGS (JERSEY) LIMITED	FLEXITRICITY LIMITED	F23158	Yes	Existing Generating CMU	0.335	1	Storage - Battery
RESERVE POWER HOLDINGS (JERSEY) LIMITED	FLEXITRICITY LIMITED	F24008	Yes	Existing Generating CMU	3.615	1	Gas
RESERVE POWER HOLDINGS (JERSEY) LIMITED	FLEXITRICITY LIMITED	F24010	Yes	Existing Generating CMU	1.277	1	Gas
RESERVE POWER HOLDINGS (JERSEY) LIMITED	FLEXITRICITY LIMITED	F24011	Yes	Existing Generating CMU	2.721	1	Gas
RESERVE POWER HOLDINGS (JERSEY) LIMITED	FLEXITRICITY LIMITED	F24012	Yes	Existing Generating CMU	1.445	1	Gas
RESERVE POWER HOLDINGS (JERSEY) LIMITED	FLEXITRICITY LIMITED	F24013	Yes	Existing Generating CMU	2.729	1	Gas
RESERVE POWER HOLDINGS (JERSEY) LIMITED	FLEXITRICITY LIMITED	F24027	Yes	Existing Generating CMU	6.367	1	Gas
RESERVE POWER HOLDINGS (JERSEY) LIMITED	FLEXITRICITY LIMITED	F24042	Yes	Proven DSR CMU	10.921	1	DSR
RESERVE POWER HOLDINGS (JERSEY) LIMITED	FLEXITRICITY LIMITED	F24043	Yes	Proven DSR CMU	10.951	1	DSR
RESERVE POWER HOLDINGS (JERSEY) LIMITED	FLEXITRICITY LIMITED	F24073	Yes	Proven DSR CMU	3.000	1	DSR
RESERVE POWER HOLDINGS (JERSEY) LIMITED	FLEXITRICITY LIMITED	F24077	Yes	Proven DSR CMU	4.600	1	DSR
RESERVE POWER HOLDINGS (JERSEY) LIMITED	FLEXITRICITY LIMITED	F24080	Yes	Proven DSR CMU	5.389	1	DSR
RESERVE POWER HOLDINGS (JERSEY) LIMITED	FLEXITRICITY LIMITED	F24081	Yes	Proven DSR CMU	5.393	1	DSR
RESERVE POWER HOLDINGS (JERSEY) LIMITED	FLEXITRICITY LIMITED	F24082	Yes	Proven DSR CMU	4.801	1	DSR
RESERVE POWER HOLDINGS (JERSEY) LIMITED	FLEXITRICITY LIMITED	F24091	Yes	Proven DSR CMU	8.433	1	DSR
RESERVE POWER HOLDINGS (JERSEY) LIMITED	FLEXITRICITY LIMITED	F24112	Yes	Proven DSR CMU	2.248	1	DSR
RESERVE POWER HOLDINGS (JERSEY) LIMITED	FLEXITRICITY LIMITED	F24113	Yes	Proven DSR CMU	1.700	1	DSR
RESERVE POWER HOLDINGS (JERSEY) LIMITED	FLEXITRICITY LIMITED	F24120	Yes	Unproven DSR CMU	1.018	1	DSR
RESERVE POWER HOLDINGS (JERSEY) LIMITED	FLEXITRICITY LIMITED	F24121	Yes	Unproven DSR CMU	2.036	1	DSR
RESERVE POWER HOLDINGS (JERSEY) LIMITED	FLEXITRICITY LIMITED	F24122	Yes	Unproven DSR CMU	2.036	1	DSR
RESERVE POWER HOLDINGS (JERSEY) LIMITED	FLEXITRICITY LIMITED	F24123	Yes	Unproven DSR CMU	5.032	1	DSR
RESERVE POWER HOLDINGS (JERSEY) LIMITED	FLEXITRICITY LIMITED	F24124	Yes	Unproven DSR CMU	5.032	1	DSR
RESERVE POWER HOLDINGS (JERSEY) LIMITED	FLEXITRICITY LIMITED	F24125	Yes	Unproven DSR CMU	5.032	1	DSR
RESERVE POWER HOLDINGS (JERSEY) LIMITED	FLEXITRICITY LIMITED	F24126	Yes	Unproven DSR CMU	5.032	1	DSR
RESERVE POWER HOLDINGS (JERSEY) LIMITED	FLEXITRICITY LIMITED	F24127	Yes	Unproven DSR CMU	5.032	1	DSR
RESERVE POWER HOLDINGS (JERSEY) LIMITED	FLEXITRICITY LIMITED	F24128	Yes	Unproven DSR CMU	5.032	1	DSR
RESERVE POWER HOLDINGS (JERSEY) LIMITED	FLEXITRICITY LIMITED	F24129	Yes	Unproven DSR CMU	5.032	1	DSR
RESERVE POWER HOLDINGS (JERSEY) LIMITED	FLEXITRICITY LIMITED	F24130	Yes	Unproven DSR CMU	5.032	1	DSR
RESERVE POWER HOLDINGS (JERSEY) LIMITED	FLEXITRICITY LIMITED	F24131	Yes	Unproven DSR CMU	5.032	1	DSR
RESERVE POWER HOLDINGS (JERSEY) LIMITED	FLEXITRICITY LIMITED	F24132	Yes	Unproven DSR CMU	5.032	1	DSR
RESERVE POWER HOLDINGS (JERSEY) LIMITED	FLEXITRICITY LIMITED	F24133	Yes	Unproven DSR CMU	5.032	1	DSR
RESERVE POWER HOLDINGS (JERSEY) LIMITED	FLEXITRICITY LIMITED	F24134	No	Unproven DSR CMU	5.000	1	DSR
RESERVE POWER HOLDINGS (JERSEY) LIMITED	FLEXITRICITY LIMITED	F24135	Yes	Unproven DSR CMU	5.000	1	DSR
RESERVE POWER HOLDINGS (JERSEY) LIMITED	FLEXITRICITY LIMITED	F24136	Yes	Unproven DSR CMU	5.000	1	DSR
RESERVE POWER HOLDINGS (JERSEY) LIMITED	FLEXITRICITY LIMITED	F24137	Yes	Unproven DSR CMU	5.000	1	DSR
RESERVE POWER HOLDINGS (JERSEY) LIMITED	FLEXITRICITY LIMITED	F24150	Yes	Existing Generating CMU	1.819	1	Gas
RESERVE POWER HOLDINGS (JERSEY) LIMITED	FLEXITRICITY LIMITED	F24162	Yes	Proven DSR CMU	2.305	1	DSR
RESERVE POWER HOLDINGS (JERSEY) LIMITED	FLEXITRICITY LIMITED	F24165	Yes	Existing Generating CMU	1.364	1	Gas
RESERVE POWER HOLDINGS (JERSEY) LIMITED	FLEXITRICITY LIMITED	F24166	Yes	Existing Generating CMU	1.091	1	Gas
RESERVE POWER HOLDINGS (JERSEY) LIMITED	FLEXITRICITY LIMITED	F24167	No	Existing Generating CMU	2.326	1	Gas

Appendix A for T-4 Auction (Delivery Year 2028/29)

Parent Company	Applicant Company	CMU ID	Capacity	AG CMU Classification	Capacity (MW)	Duration (Years)	Fuel Type
RESERVE POWER HOLDINGS (JERSEY) LIMITED	FLEXITRICITY LIMITED	F24168	Yes	Existing Generating CMU	0.955	1	Gas
RESERVE POWER HOLDINGS (JERSEY) LIMITED	FLEXITRICITY LIMITED	F24169	Yes	Existing Generating CMU	1.935	1	Gas
RESERVE POWER HOLDINGS (JERSEY) LIMITED	FLEXITRICITY LIMITED	F24170	Yes	Unproven DSR CMU	5.000	1	DSR
RESERVE POWER HOLDINGS (JERSEY) LIMITED	FLEXITRICITY LIMITED	F24171	Yes	Unproven DSR CMU	5.000	1	DSR
RESERVE POWER HOLDINGS (JERSEY) LIMITED	FLEXITRICITY LIMITED	F24172	Yes	Unproven DSR CMU	5.000	1	DSR
RESERVE POWER HOLDINGS (JERSEY) LIMITED	FLEXITRICITY LIMITED	F24173	No	Unproven DSR CMU	5.000	1	DSR
RESERVE POWER HOLDINGS (JERSEY) LIMITED	FLEXITRICITY LIMITED	F24174	No	Unproven DSR CMU	5.000	1	DSR
RESERVE POWER HOLDINGS (JERSEY) LIMITED	FLEXITRICITY LIMITED	F24175	Yes	Unproven DSR CMU	5.000	1	DSR
RESERVE POWER HOLDINGS (JERSEY) LIMITED	FLEXITRICITY LIMITED	F24176	Yes	Unproven DSR CMU	5.000	1	DSR
RESERVE POWER HOLDINGS (JERSEY) LIMITED	FLEXITRICITY LIMITED	F24177	Yes	Unproven DSR CMU	5.000	1	DSR
RESERVE POWER HOLDINGS (JERSEY) LIMITED	FLEXITRICITY LIMITED	F24178	Yes	Unproven DSR CMU	5.000	1	DSR
RESERVE POWER HOLDINGS (JERSEY) LIMITED	FLEXITRICITY LIMITED	F24179	Yes	Unproven DSR CMU	5.000	1	DSR
RESERVE POWER HOLDINGS (JERSEY) LIMITED	FLEXITRICITY LIMITED	F24180	No	Unproven DSR CMU	2.000	1	DSR
RESERVE POWER HOLDINGS (JERSEY) LIMITED	FLEXITRICITY LIMITED	F24181	Yes	Unproven DSR CMU	2.000	1	DSR
RESERVE POWER HOLDINGS (JERSEY) LIMITED	FLEXITRICITY LIMITED	F24182	Yes	Unproven DSR CMU	2.000	1	DSR
RESERVE POWER HOLDINGS (JERSEY) LIMITED	FLEXITRICITY LIMITED	F24183	No	Unproven DSR CMU	2.000	1	DSR
RESERVE POWER HOLDINGS (JERSEY) LIMITED	FLEXITRICITY LIMITED	F24184	No	Unproven DSR CMU	2.000	1	DSR
RESERVE POWER HOLDINGS (JERSEY) LIMITED	FLEXITRICITY LIMITED	F24185	No	Unproven DSR CMU	10.000	1	DSR
RESERVE POWER HOLDINGS (JERSEY) LIMITED	FLEXITRICITY LIMITED	F24186	No	Unproven DSR CMU	10.000	1	DSR
RESERVE POWER HOLDINGS (JERSEY) LIMITED	FLEXITRICITY LIMITED	F24187	No	Unproven DSR CMU	10.000	1	DSR
RESERVE POWER HOLDINGS (JERSEY) LIMITED	FLEXITRICITY LIMITED	F24188	No	Unproven DSR CMU	10.000	1	DSR
RESERVE POWER HOLDINGS (JERSEY) LIMITED	FLEXITRICITY LIMITED	F24189	No	Unproven DSR CMU	10.000	1	DSR
RESERVE POWER HOLDINGS (JERSEY) LIMITED	FLEXITRICITY LIMITED	F24190	No	Unproven DSR CMU	10.000	1	DSR
RESERVE POWER HOLDINGS (JERSEY) LIMITED	FLEXITRICITY LIMITED	F24191	Yes	Unproven DSR CMU	3.993	15	DSR
RRAM Energy Limited	NEXTPOWER SOUTH LOWFIELD LIMITED	NESEF03	Yes	Existing Generating CMU	2.474	1	Solar
RRAM Energy Ltd	NEXTPOWER GRANGE LIMITED	NESEF02	Yes	Existing Generating CMU	2.461	1	Solar
RWE Generation UK Holdings Limited	RWE GENERATION UK PLC	BRAE24	Yes	Existing Generating CMU	1.736	1	Hydro
RWE Generation UK Holdings Limited	RWE GENERATION UK PLC	CHEG24	Yes	Existing Generating CMU	40.584	1	Gas
RWE Generation UK Holdings Limited	RWE GENERATION UK PLC	CHWE24	Yes	New Build Generating CMU	21.035	15	Gas
RWE Generation UK Holdings Limited	RWE GENERATION UK PLC	COW124	Yes	Existing Generating CMU	65.443	1	Distillate
RWE Generation UK Holdings Limited	RWE GENERATION UK PLC	COW224	Yes	Existing Generating CMU	65.443	1	Distillate
RWE Generation UK Holdings Limited	RWE GENERATION UK PLC	CWMD24	Yes	Existing Generating CMU	8.839	1	Hydro
RWE Generation UK Holdings Limited	RWE GENERATION UK PLC	DGHH24	Yes	Existing Generating CMU	14.766	1	Hydro
RWE Generation UK Holdings Limited	RWE GENERATION UK PLC	DGLH24	Yes	Existing Generating CMU	13.503	1	Hydro
RWE Generation UK Holdings Limited	RWE GENERATION UK PLC	DIB524	Yes	Existing Generating CMU	692.393	1	Gas
RWE Generation UK Holdings Limited	RWE GENERATION UK PLC	DIB624	Yes	Existing Generating CMU	649.119	1	Gas
RWE Generation UK Holdings Limited	RWE GENERATION UK PLC	DID124	Yes	Existing Generating CMU	23.373	1	Distillate
RWE Generation UK Holdings Limited	RWE GENERATION UK PLC	DID224	Yes	Existing Generating CMU	23.373	1	Distillate
RWE Generation UK Holdings Limited	RWE GENERATION UK PLC	DID324	Yes	Existing Generating CMU	23.373	1	Distillate
RWE Generation UK Holdings Limited	RWE GENERATION UK PLC	DID424	Yes	Existing Generating CMU	23.373	1	Distillate
RWE Generation UK Holdings Limited	RWE GENERATION UK PLC	DOUG24	Yes	Existing Generating CMU	2.730	1	Hydro
RWE Generation UK Holdings Limited	RWE GENERATION UK PLC	GROG24	Yes	Existing Generating CMU	2.044	1	Hydro
RWE Generation UK Holdings Limited	RWE GENERATION UK PLC	GYAR24	Yes	Existing Generating CMU	372.895	1	Gas
RWE Generation UK Holdings Limited	RWE GENERATION UK PLC	HDAG24	Yes	Existing Generating CMU	0.988	1	Hydro
RWE Generation UK Holdings Limited	RWE GENERATION UK PLC	HDD124	Yes	Existing Generating CMU	1.268	1	Hydro
RWE Generation UK Holdings Limited	RWE GENERATION UK PLC	HYTH24	Yes	Existing Generating CMU	45.384	1	Gas
RWE Generation UK Holdings Limited	RWE GENERATION UK PLC	LBAR24	Yes	Existing Generating CMU	673.636	1	Gas
RWE Generation UK Holdings Limited	RWE GENERATION UK PLC	PM1124	Yes	Existing Generating CMU	399.998	1	Gas
RWE Generation UK Holdings Limited	RWE GENERATION UK PLC	PM1224	Yes	Existing Generating CMU	399.998	1	Gas
RWE Generation UK Holdings Limited	RWE GENERATION UK PLC	PM3124	Yes	Existing Generating CMU	399.998	1	Gas
RWE Generation UK Holdings Limited	RWE GENERATION UK PLC	PM4124	Yes	Existing Generating CMU	399.998	1	Gas
RWE Generation UK Holdings Limited	RWE GENERATION UK PLC	PM5124	Yes	Existing Generating CMU	399.998	1	Gas
RWE Generation UK Holdings Limited	RWE GENERATION UK PLC	PMS524	Yes	New Build Generating CMU	73.290	15	Storage - Battery
RWE Generation UK Holdings Limited	RWE GENERATION UK PLC	RVRE24	Yes	Existing Generating CMU	2.730	1	Hydro
RWE Generation UK Holdings Limited	RWE GENERATION UK PLC	STA124	Yes	Existing Generating CMU	398.361	1	Gas
RWE Generation UK Holdings Limited	RWE GENERATION UK PLC	STA224	Yes	Existing Generating CMU	398.361	1	Gas
RWE Generation UK Holdings Limited	RWE GENERATION UK PLC	STA324	Yes	Existing Generating CMU	398.361	1	Gas
RWE Generation UK Holdings Limited	RWE GENERATION UK PLC	STA424	Yes	Existing Generating CMU	398.361	1	Gas
RWE Renewables UK Limited	RWE RENEWABLES UK ONSHORE WIND LIMITED	STGW24	Yes	Existing Generating CMU	1.195	1	Onshore Wind
RWE Renewables UK Limited	RWE RENEWABLES UK SCROBY SANDS LIMITED	SCRW24	Yes	Existing Generating CMU	5.791	1	Offshore Wind
RWE Renewables UK Solar Holdings Limited	RWE RENEWABLES UK SOLAR AND STORAGE LIMITED	ASHB24	Yes	New Build Generating CMU	1.812	1	Storage - Battery
RWE Renewables UK Solar Holdings Limited	RWE RENEWABLES UK SOLAR AND STORAGE LIMITED	RASB24	No	New Build Generating CMU	8.139	15	Storage - Battery
SCCL Holdings Limited	DEESIDE POWER (UK) LIMITED	D2_244	Yes	New Build Generating CMU	46.652	15	Gas
SCCL Holdings Limited	INDIAN QUEENS POWER LIMITED	IQ_244	Yes	Existing Generating CMU	130.886	1	Diesel
SCCL Holdings Limited	SALTEND COGENERATION COMPANY LIMITED	S1_244	Yes	Existing Generating CMU	333.483	1	Gas
SCCL Holdings Limited	SALTEND COGENERATION COMPANY LIMITED	S2_244	Yes	Existing Generating CMU	333.483	1	Gas
SCCL Holdings Limited	SALTEND COGENERATION COMPANY LIMITED	S3_244	Yes	Existing Generating CMU	333.483	1	Gas
Scot Stability Limited	ROTHENORMAN FLEXPOWER LTD	ROTH28	Yes	New Build Generating CMU	7.885	15	Storage - Battery
Scot Stability Ltd	KILMARNOCK FLEXPOWER LTD	KMS28A	Yes	New Build Generating CMU	13.799	15	Storage - Battery
SCOTTISHPOWER RENEWABLE ENERGY LIMITED	SCOTTISHPOWER RENEWABLES (UK) LIMITED	BLWIN1	Yes	Existing Generating CMU	7.835	1	Onshore Wind
SCOTTISHPOWER RENEWABLE ENERGY LIMITED	SCOTTISHPOWER RENEWABLES (UK) LIMITED	GRE_WF	Yes	Existing Generating CMU	1.793	1	Onshore Wind
SCOTTISHPOWER RENEWABLE ENERGY LIMITED	SCOTTISHPOWER RENEWABLES (UK) LIMITED	WHL_WF	Yes	Existing Generating CMU	1.208	1	Onshore Wind
SCOTTISHPOWER RENEWABLE ENERGY LIMITED	SCOTTISHPOWER RENEWABLES (UK) LIMITED	WLWIND	Yes	Existing Generating CMU	16.932	1	Onshore Wind
SCOTTISHPOWER RENEWABLES (UK) LIMITED	COLDHAM WINDFARM LIMITED	CLD_WF	Yes	Existing Generating CMU	0.930	1	Onshore Wind
SEABANK POWER LIMITED	SEABANK POWER LIMITED	SPL1-2	Yes	Existing Generating CMU	1,122.323	1	Gas
Secure and Efficient Bidco Limited	EFFICIENT GENERATION LIMITED	EFF028	Yes	Existing Generating CMU	4.255	1	Gas
Secure and Efficient Bidco Limited	SECURE GENERATION LIMITED	SEC028	Yes	Existing Generating CMU	3.051	1	Gas
Shift Energy Limited	IMPACT POWER LIMITED	EMIST2	Yes	Proven DSR CMU	2.111	1	DSR
Shukco 327 Ltd	SUEZ RECYCLING AND RECOVERY KIRKLEES LTD	SUEZ21	Yes	Existing Generating CMU	9.229	1	Waste
SIMEC LOCHABER HYDROPOWER 2 LIMITED	SIMEC LOCHABER HYDROPOWER 2 LIMITED	G12023	Yes	Existing Generating CMU	15.476	1	Hydro
SIMEC LOCHABER HYDROPOWER 2 LIMITED	SIMEC LOCHABER HYDROPOWER 2 LIMITED	G22023	Yes	Existing Generating CMU	15.859	1	Hydro
SIMEC LOCHABER HYDROPOWER 2 LIMITED	SIMEC LOCHABER HYDROPOWER 2 LIMITED	G32023	Yes	Existing Generating CMU	12.606	1	Hydro
SIMEC LOCHABER HYDROPOWER 2 LIMITED	SIMEC LOCHABER HYDROPOWER 2 LIMITED	G42023	Yes	Existing Generating CMU	15.579	1	Hydro
SIMEC LOCHABER HYDROPOWER 2 LIMITED	SIMEC LOCHABER HYDROPOWER 2 LIMITED	G52023	Yes	Existing Generating CMU	15.627	1	Hydro
SLOANE DEVELOPMENTS LIMITED	ADV 001 LIMITED	HIND12	Yes	New Build Generating CMU	7.012	15	Gas
SLOANE DEVELOPMENTS LIMITED	PYEBRIDGE POWER LTD	MAPB24	Yes	Existing Generating CMU	7.278	1	Gas
SMS Energy Services Limited	CARE POWER (WOLVERHAMPTON) LIMITED	WOLVE5	Yes	New Build Generating CMU	7.329	3	Storage - Battery
Sostenoe BESS 2 (UK) Limited	SHEAF ENERGY LIMITED	SEL1T4	No	New Build Generating CMU	27.368	15	Storage - Battery
South Tyne & Wear Energy Recovery Holdings Ltd	SOUTH TYNE & WEAR ENERGY RECOVERY LTD	SUEZ24	Yes	Existing Generating CMU	20.545	1	Waste
SSE plc	KEADBY GENERATION LIMITED	KEAD28	Yes	Existing Generating CMU	687.397	1	Gas
SSE plc	MEDWAY POWER LIMITED	MEDP28	Yes	Existing Generating CMU	668.483	1	Gas
SSE plc	SSE ENERGY SUPPLY LIMITED	MRWD28	Yes	Existing Generating CMU	836.740	1	Gas
SSE plc	SSE GENERATION LIMITED	ALTN28	Yes	Existing Generating CMU	5.776	1	Hydro
SSE plc	SSE GENERATION LIMITED	ARTF28	Yes	Existing Generating CMU	1.899	1	Onshore Wind
SSE plc	SSE GENERATION LIMITED	BEAU28	Yes	Existing Generating CMU	36.400	1	Hydro
SSE plc	SSE GENERATION LIMITED	CASS28	Yes	Existing Generating CMU	10.010	1	Hydro
SSE plc	SSE GENERATION LIMITED	CLAC28	Yes	Existing Generating CMU	36.400	1	Hydro
SSE plc	SSE GENERATION LIMITED	CLUN28	Yes	Existing Generating CMU	69.342	1	Hydro
SSE plc	SSE GENERATION LIMITED	CNCR28	Yes	Existing Generating CMU	18.200	1	Hydro
SSE plc	SSE GENERATION LIMITED	CUCH28	Yes	Existing Generating CMU	1.808	1	Hydro
SSE plc	SSE GENERATION LIMITED	CUIL28	Yes	Existing Generating CMU	2.730	1	Hydro
SSE plc	SSE GENERATION LIMITED	CULL28	Yes	Existing Generating CMU	14.581	1	Hydro
SSE plc	SSE GENERATION LIMITED	DEA128	Yes	Existing Generating CMU	17.290	1	Hydro
SSE plc	SSE GENERATION LIMITED	DEA228	Yes	Existing Generating CMU	17.290	1	Hydro
SSE plc	SSE GENERATION LIMITED	DRUM28	Yes	Existing Generating CMU	2.125	1	Onshore Wind
SSE plc	SSE GENERATION LIMITED	DZIE28	Yes	Existing Generating CMU	3.640	1	Hydro
SSE plc	SSE GENERATION LIMITED	ERR128	Yes	Existing Generating CMU	22.750	1	Hydro

Appendix A for T-4 Auction (Delivery Year 2028/29)

Parent Company	Applicant Company	CMU ID	Capacity	AG CMU Classification	Capacity (MW)	Duration (Years)	Fuel Type
SSE plc	SSE GENERATION LIMITED	ERR228	Yes	Existing Generating CMU	22.750	1	Hydro
SSE plc	SSE GENERATION LIMITED	ERR328	Yes	Existing Generating CMU	22.750	1	Hydro
SSE plc	SSE GENERATION LIMITED	FALL28	Yes	Existing Generating CMU	4.583	1	Hydro
SSE plc	SSE GENERATION LIMITED	FAS128	Yes	Existing Generating CMU	20.930	1	Hydro
SSE plc	SSE GENERATION LIMITED	FAS228	Yes	Existing Generating CMU	20.930	1	Hydro
SSE plc	SSE GENERATION LIMITED	FAS328	Yes	Existing Generating CMU	20.930	1	Hydro
SSE plc	SSE GENERATION LIMITED	FASC28	Yes	Existing Generating CMU	6.825	1	Hydro
SSE plc	SSE GENERATION LIMITED	FINL28	Yes	Existing Generating CMU	15.015	1	Hydro
SSE plc	SSE GENERATION LIMITED	FOY128	Yes	Existing Generating CMU	139.485	1	Storage - Pumped
SSE plc	SSE GENERATION LIMITED	FOY228	Yes	Existing Generating CMU	139.485	1	Storage - Pumped
SSE plc	SSE GENERATION LIMITED	GAUR28	Yes	Existing Generating CMU	6.825	1	Hydro
SSE plc	SSE GENERATION LIMITED	GLEN28	Yes	Existing Generating CMU	47.320	1	Hydro
SSE plc	SSE GENERATION LIMITED	GRUD28	Yes	Existing Generating CMU	19.838	1	Hydro
SSE plc	SSE GENERATION LIMITED	INAW28	Yes	Refurbishing Generating CMU	22.750	15	Hydro
SSE plc	SSE GENERATION LIMITED	INVG28	Yes	Existing Generating CMU	18.200	1	Hydro
SSE plc	SSE GENERATION LIMITED	KERR28	Yes	Existing Generating CMU	1.138	1	Hydro
SSE plc	SSE GENERATION LIMITED	KILL28	Yes	Existing Generating CMU	13.841	1	Hydro
SSE plc	SSE GENERATION LIMITED	KILM28	Yes	Existing Generating CMU	1.911	1	Hydro
SSE plc	SSE GENERATION LIMITED	KING28	Yes	Existing Generating CMU	3.185	1	Hydro
SSE plc	SSE GENERATION LIMITED	LEDK28	Yes	Existing Generating CMU	2.730	1	Hydro
SSE plc	SSE GENERATION LIMITED	LOC128	Yes	Existing Generating CMU	20.475	1	Hydro
SSE plc	SSE GENERATION LIMITED	LOC228	Yes	Existing Generating CMU	20.475	1	Hydro
SSE plc	SSE GENERATION LIMITED	LOCC28	Yes	Existing Generating CMU	1.820	1	Hydro
SSE plc	SSE GENERATION LIMITED	LOER28	Yes	Existing Generating CMU	2.002	1	Hydro
SSE plc	SSE GENERATION LIMITED	LOGA28	Yes	Existing Generating CMU	5.460	1	Hydro
SSE plc	SSE GENERATION LIMITED	LUIC28	Yes	Existing Generating CMU	30.940	1	Hydro
SSE plc	SSE GENERATION LIMITED	LUSS28	Yes	Existing Generating CMU	1.894	1	Hydro
SSE plc	SSE GENERATION LIMITED	MOSS28	Yes	Existing Generating CMU	17.017	1	Hydro
SSE plc	SSE GENERATION LIMITED	MULL28	Yes	Existing Generating CMU	1.842	1	Hydro
SSE plc	SSE GENERATION LIMITED	NANT28	Yes	Existing Generating CMU	13.650	1	Hydro
SSE plc	SSE GENERATION LIMITED	ORRI28	Yes	Existing Generating CMU	16.380	1	Hydro
SSE plc	SSE GENERATION LIMITED	QUOI28	Yes	Existing Generating CMU	16.426	1	Hydro
SSE plc	SSE GENERATION LIMITED	RAN128	Yes	Existing Generating CMU	13.346	1	Hydro
SSE plc	SSE GENERATION LIMITED	RAN228	Yes	Existing Generating CMU	13.346	1	Hydro
SSE plc	SSE GENERATION LIMITED	RAN328	Yes	Existing Generating CMU	13.346	1	Hydro
SSE plc	SSE GENERATION LIMITED	SHIN28	Yes	Existing Generating CMU	20.129	1	Hydro
SSE plc	SSE GENERATION LIMITED	SLO128	Yes	Existing Generating CMU	36.400	1	Hydro
SSE plc	SSE GENERATION LIMITED	SLO228	Yes	Existing Generating CMU	36.400	1	Hydro
SSE plc	SSE GENERATION LIMITED	SLO328	Yes	Existing Generating CMU	36.400	1	Hydro
SSE plc	SSE GENERATION LIMITED	SLO428	Yes	Existing Generating CMU	29.575	1	Hydro
SSE plc	SSE GENERATION LIMITED	SRON28	Yes	Existing Generating CMU	4.550	1	Hydro
SSE plc	SSE GENERATION LIMITED	STFL28	Yes	Existing Generating CMU	15.315	1	Hydro
SSE plc	SSE GENERATION LIMITED	STRV28	Yes	Existing Generating CMU	6.274	1	Hydro
SSE plc	SSE GENERATION LIMITED	TORR28	Yes	Existing Generating CMU	13.650	1	Hydro
SSE plc	SSE GENERATION LIMITED	TUM128	Yes	Existing Generating CMU	15.470	1	Hydro
SSE plc	SSE GENERATION LIMITED	TUM228	Yes	Existing Generating CMU	15.470	1	Hydro
SSE plc	SSE RENEWABLES SOLAR & BATTERY HOLDINGS LIMITED	LITS28	Yes	New Build Generating CMU	1.375	15	Solar
SSE Plc	SSE RENEWABLES WIND FARMS (UK) LIMITED	HAHI28	Yes	Existing Generating CMU	6.633	1	Onshore Wind
SSE plc	SSE THERMAL GENERATION (SCOTLAND) LIMITED	PEH128	Yes	Existing Generating CMU	1,073.210	1	Gas
SSE plc	SSEPG (OPERATIONS) LIMITED	BURG28	Yes	Existing Generating CMU	43.978	1	Gas
SSE plc	SSEPG (OPERATIONS) LIMITED	CHIC28	Yes	Existing Generating CMU	43.978	1	Gas
Staterra Energy Limited	CHICKERELL STORAGE LIMITED	SEL155	Yes	New Build Generating CMU	83.744	15	Storage - Battery
Stat-Flex Limited	SALTHOLME SOUTH POWER LIMITED	SEL144	Yes	Existing Generating CMU	46.736	1	Gas
Statkraft AS	Statkraft Markets GmbH	RHE1_8	Yes	Existing Generating CMU	11.805	1	Hydro
Statkraft AS	Statkraft Markets GmbH	RHE2_8	Yes	Existing Generating CMU	19.780	1	Hydro
Statkraft AS	Statkraft Markets GmbH	RHE3_8	Yes	Existing Generating CMU	20.056	1	Hydro
Statkraft AS	STATKRAFT UK LTD	THOR_3	No	New Build Generating CMU	38.401	15	Storage - Battery
Statkraft UK Ltd	COYLTON ENERGY LIMITED	COYB-4	Yes	New Build Generating CMU	6.520	15	Storage - Battery
STOR 122 Ltd	STOR 122 Ltd	STP22B	Yes	New Build Generating CMU	7.479	15	Gas
STOR 122 Ltd	STOR 122 Ltd	STPW22	Yes	New Build Generating CMU	7.479	15	Gas
STOR 123 Ltd	STOR 123 Ltd	STP23B	Yes	New Build Generating CMU	7.479	15	Gas
STOR 123 Ltd	STOR 123 Ltd	STPW23	Yes	New Build Generating CMU	7.479	15	Gas
STOR 132 Ltd	STOR 132 Ltd	STP32B	Yes	New Build Generating CMU	7.479	15	Gas
STOR 132 Ltd	STOR 132 Ltd	STPW32	Yes	New Build Generating CMU	7.479	15	Gas
STOR 140 Ltd	STOR 140 Ltd	STP40B	Yes	New Build Generating CMU	7.479	15	Gas
STOR 140 Ltd	STOR 140 Ltd	STPW40	Yes	New Build Generating CMU	7.479	15	Gas
Suez Recycling And Recovery Holdings Uk Ltd	SUEZ RECYCLING AND RECOVERY UK LTD	SUEZ22	Yes	Existing Generating CMU	18.889	1	Waste
Suez Recycling And Recovery Uk Ltd	SUEZ RECYCLING AND RECOVERY SUFFOLK LTD	SUEZ25	Yes	Existing Generating CMU	23.337	1	Waste
Suncrop Generation Limited	SUNCROP BURSTWICK GENERATION LIMITED	BRGP28	Yes	New Build Generating CMU	4.748	15	Gas
SUSI Storage Development UK Ltd	SUSI EELPOWER ROCK FARM LIMITED	ROCK28	Yes	Existing Generating CMU	1.670	1	Storage - Battery
SUSI Storage Development UK Ltd	SUSI EELPOWER WINCHESTER LIMITED	WINP28	Yes	Existing Generating CMU	0.856	1	Storage - Battery
Sutton Bridge Power Systems (London) Limited	SUTTON BRIDGE POWER GENERATION	285BRF	Yes	Refurbishing Generating CMU	773.075	1	Gas
TATA CHEMICALS EUROPE LIMITED	WINNINGTON CHP LIMITED	W3NCPH	Yes	Existing Generating CMU	36.204	1	Gas
THE FERN POWER COMPANY LIMITED	BURY POWER LIMITED	BURY24	Yes	Existing Generating CMU	18.231	1	Gas
THE FERN POWER COMPANY LIMITED	CLYNE POWER LIMITED	CLYN24	Yes	Existing Generating CMU	14.584	1	Gas
THE FERN POWER COMPANY LIMITED	CULVERY POWER LIMITED	CULV24	Yes	Existing Generating CMU	12.855	1	Gas
THE FERN POWER COMPANY LIMITED	DAFEN RESERVE POWER LIMITED	DAFE24	Yes	Existing Generating CMU	9.162	1	Gas
THE FERN POWER COMPANY LIMITED	HULL RESERVE POWER LIMITED	HULL24	Yes	Existing Generating CMU	19.446	1	Gas
THE FERN POWER COMPANY LIMITED	IMMINGHAM POWER LIMITED	IMMI24	Yes	Existing Generating CMU	14.771	1	Gas
THE FERN POWER COMPANY LIMITED	IRWELL POWER LIMITED	IRWE24	Yes	Existing Generating CMU	14.538	1	Gas
THE FERN POWER COMPANY LIMITED	KILN POWER LIMITED	KILN24	Yes	Existing Generating CMU	14.772	1	Gas
THE FERN POWER COMPANY LIMITED	LODDON POWER LIMITED	LODD24	Yes	Existing Generating CMU	14.678	1	Gas
THE FERN POWER COMPANY LIMITED	MARDEN POWER LIMITED	MARD24	Yes	Existing Generating CMU	18.418	1	Gas
THE FERN POWER COMPANY LIMITED	NORTHWICH POWER LIMITED	NORT24	Yes	Existing Generating CMU	18.511	1	Gas
THE FERN POWER COMPANY LIMITED	OGMORE POWER LIMITED	OGMO24	Yes	Existing Generating CMU	14.678	1	Gas
THE FERN POWER COMPANY LIMITED	ST ASAPH POWER LIMITED	STAS24	Yes	Existing Generating CMU	14.771	1	Gas
THE FERN POWER COMPANY LIMITED	WARRINGTON POWER LIMITED	WARR24	Yes	Existing Generating CMU	14.771	1	Gas
THE FERN POWER COMPANY LIMITED	WHARF POWER LIMITED	WHAR24	Yes	Existing Generating CMU	14.771	1	Gas
THE FERN POWER COMPANY LIMITED	WOLVERHAMPTON POWER LTD	WOLV24	Yes	Existing Generating CMU	14.584	1	Gas
The Renewables Infrastructure Group Limited	CAPELLA BESS LTD	24CAP4	Yes	New Build Generating CMU	10.470	15	Storage - Battery
The Renewables Infrastructure Group Limited	SPENNYMOOR ENERGY STORAGE LIMITED	24SPE4	Yes	New Build Generating CMU	13.820	15	Storage - Battery
UK Transition Power Holdings Limited	THORPE MARSH GREEN ENERGY HUB LIMITED	24TM_1	Yes	New Build Generating CMU	58.436	15	Storage - Battery
UK Transition Power Holdings Limited	THORPE MARSH GREEN ENERGY HUB LIMITED	24TM_2	Yes	New Build Generating CMU	58.436	15	Storage - Battery
UK Transition Power Holdings Limited	THORPE MARSH GREEN ENERGY HUB LIMITED	24TM_3	Yes	New Build Generating CMU	58.436	15	Storage - Battery
UK Transition Power Holdings Limited	THORPE MARSH GREEN ENERGY HUB LIMITED	24TM_4	Yes	New Build Generating CMU	58.436	15	Storage - Battery
UK Transition Power Holdings Limited	THORPE MARSH GREEN ENERGY HUB LIMITED	24TM_5	Yes	New Build Generating CMU	58.436	15	Storage - Battery
UK Transition Power Limited	WEST BURTON B LIMITED	WB1-24	Yes	Existing Generating CMU	389.266	1	Gas
UK Transition Power Limited	WEST BURTON B LIMITED	WB2-24	Yes	Existing Generating CMU	389.266	1	Gas
UK Transition Power Limited	WEST BURTON B LIMITED	WB3-24	Yes	Existing Generating CMU	389.266	1	Gas
Uniper Holding GmbH	UNIPER UK LIMITED	CDCL41	Yes	Existing Generating CMU	404.728	1	Gas
Uniper Holding GmbH	UNIPER UK LIMITED	CNOP61	Yes	Existing Generating CMU	313.778	1	Gas
Uniper Holding GmbH	UNIPER UK LIMITED	CNOP62	Yes	Existing Generating CMU	313.778	1	Gas
Uniper Holding GmbH	UNIPER UK LIMITED	CNOP63	Yes	Existing Generating CMU	313.778	1	Gas
Uniper Holding GmbH	UNIPER UK LIMITED	CNOP64	Yes	Existing Generating CMU	313.778	1	Gas
Uniper Holding GmbH	UNIPER UK LIMITED	EECL41	Yes	Existing Generating CMU	401.999	1	Gas
Uniper Holding GmbH	UNIPER UK LIMITED	GRAI36	Yes	Existing Generating CMU	425.646	1	Gas
Uniper Holding GmbH	UNIPER UK LIMITED	GRAI37	Yes	Existing Generating CMU	425.646	1	Gas



Appendix A for T-4 Auction (Delivery Year 2028/29)

Parent Company	Applicant Company	CMU ID	Capacity AG	CMU Classification	Capacity (MW)	Duration (Years)	Fuel Type
Uniper Holding GmbH	UNIPER UK LIMITED	GRAI38	Yes	Existing Generating CMU	425.646	1	Gas
Uniper Holding GmbH	UNIPER UK LIMITED	GRGT61	Yes	Existing Generating CMU	26.151	1	Diesel
Uniper Holding GmbH	UNIPER UK LIMITED	GRGT64	Yes	Existing Generating CMU	25.216	1	Diesel
Uniper Holding GmbH	UNIPER UK LIMITED	HOLF01	Yes	Proven DSR CMU	6.326	1	DSR
Uniper Holding GmbH	UNIPER UK LIMITED	KILH51	Yes	Existing Generating CMU	287.555	1	Gas
Uniper Holding GmbH	UNIPER UK LIMITED	KILH52	Yes	Existing Generating CMU	291.148	1	Gas
Uniper Holding GmbH	UNIPER UK LIMITED	TAL102	Yes	Existing Generating CMU	67.196	1	Diesel
Uniper Holding GmbH	UNIPER UK LIMITED	TAL103	Yes	Existing Generating CMU	63.456	1	Diesel
Varco Energy Limited	SIZING JOHN LIMITED	VAR009	Yes	New Build Generating CMU	17.824	15	Storage - Battery
VEOLIA ENVIRONNEMENT SA	VEOLIA UK LIMITED	CHIN01	Yes	Existing Generating CMU	6.711	1	Waste
VEOLIA ENVIRONNEMENT SA	VEOLIA UK LIMITED	LISH01	Yes	Existing Generating CMU	1.230	1	Gas
VEOLIA ENVIRONNEMENT SA	VEOLIA UK LIMITED	MWOOD1	Yes	Existing Generating CMU	13.293	1	Waste
VEOLIA ENVIRONNEMENT SA	VEOLIA UK LIMITED	NEWH10	Yes	Existing Generating CMU	14.954	1	Waste
VEOLIA ENVIRONNEMENT SA	VEOLIA UK LIMITED	PORT01	Yes	Existing Generating CMU	12.727	1	Waste
VEOLIA ENVIRONNEMENT SA	VEOLIA UK LIMITED	RDEH01	Yes	Existing Generating CMU	1.340	1	Gas
VEOLIA ENVIRONNEMENT SA	VEOLIA UK LIMITED	SGH008	Yes	Existing Generating CMU	3.592	1	Gas
VEOLIA ENVIRONNEMENT SA	VEOLIA UK LIMITED	SPOND1	Yes	Existing Generating CMU	2.316	1	Gas
VEOLIA ENVIRONNEMENT SA	VEOLIA UK LIMITED	STAF10	Yes	Existing Generating CMU	23.170	1	Waste
VEOLIA ENVIRONNEMENT SA	VEOLIA UK LIMITED	TYSE09	Yes	Existing Generating CMU	24.375	1	Waste
VEOLIA ENVIRONNEMENT SA	VEOLIA UK LIMITED	UHB001	Yes	Existing Generating CMU	2.399	1	Gas
VEOLIA ENVIRONNEMENT SA	VEOLIA UK LIMITED	UNL001	Yes	Existing Generating CMU	3.552	1	Gas
Viridor Energy (Investments Two) Limited	VRIDOR ENERGY LIMITED	CARD24	Yes	Existing Generating CMU	32.416	1	Waste
Viridor Energy (Investments Two) Limited	VRIDOR ENERGY LIMITED	EXEV24	Yes	Existing Generating CMU	3.281	1	Waste
Virmati Energy Ltd	FIELD KEITH LTD	24KE4	Yes	New Build Generating CMU	7.231	15	Storage - Battery
VOLTALIS UK LIMITED	VOLTALIS UK LIMITED	VOLT_2	Yes	Unproven DSR CMU	0.799	7	DSR
VOLTALIS UK LIMITED	VOLTALIS UK LIMITED	VOLT_4	Yes	Unproven DSR CMU	1.597	7	DSR
VOLTALIS UK LIMITED	VOLTALIS UK LIMITED	VOLT_6	Yes	Unproven DSR CMU	2.396	7	DSR
VOLTALIS UK LIMITED	VOLTALIS UK LIMITED	VOLT_8	Yes	Unproven DSR CMU	3.994	7	DSR
VOLTALIS UK LIMITED	VOLTALIS UK LIMITED	VOLT10	Yes	Unproven DSR CMU	7.987	7	DSR
Volitaria Limited	FALKIRK POWER LTD	BANK24	Yes	New Build Generating CMU	7.664	15	Storage - Battery
Volitaria Limited	VOLTARIA BES 101 LTD	HOCK24	No	New Build Generating CMU	8.900	15	Storage - Battery
VPI Holding Limited	VPI Immingham LLP	ICH13	Yes	Existing Generating CMU	1,107.771	1	Gas
VPI Holding Limited	VPI POWER LIMITED	VP24DC	Yes	Existing Generating CMU	738.514	1	Gas
VPI Holding Limited	VPI POWER LIMITED	VP24RH	Yes	Existing Generating CMU	650.293	1	Gas
VPI Holding Limited	VPI POWER LIMITED	VP24SP	Yes	Existing Generating CMU	381.990	1	Gas
Whitewater Holdings Uk Limited	RIVER NENE POWER LIMITED	PETE28	Yes	Existing Generating CMU	228.229	1	Gas
Whitewater Holdings UK Limited	WHITETOWER ENERGY LIMITED	CROY28	Yes	Existing Generating CMU	42.206	1	Gas
Whitewater Holdings UK Limited	WHITETOWER ENERGY LIMITED	EXET28	Yes	Existing Generating CMU	42.932	1	Gas
Whitewater Holdings UK Limited	WHITETOWER ENERGY LIMITED	HEA28a	Yes	Existing Generating CMU	42.160	1	Gas
Whitewater Holdings UK Limited	WHITETOWER ENERGY LIMITED	HEA28b	Yes	Existing Generating CMU	43.977	1	Gas
Whitewater Holdings UK Limited	WHITETOWER ENERGY LIMITED	THRN28	Yes	Existing Generating CMU	37.217	1	Gas
Whitewater Holdings UK Limited	WHITETOWER ENERGY LIMITED	VKIN28	Yes	Existing Generating CMU	43.788	1	Gas
Yiem Group Limited	CHECKERS ENERGY LIMITED	CHEK28	Yes	New Build Generating CMU	10.470	15	Storage - Battery
Yiem Group Limited	REAY POWER LIMITED	REY28B	Yes	New Build Generating CMU	7.120	15	Storage - Battery
Yiem Group Limited	ROOT-POWER (NORTH) LIMITED	GRN28B	Yes	New Build Generating CMU	8.376	15	Storage - Battery
Yiem Group Limited	ROOT-POWER (NORTH) LIMITED	WDS28B	Yes	New Build Generating CMU	10.470	15	Storage - Battery
Yiem Group Limited	ROOT-POWER (SOUTH) LIMITED	BRIN28	Yes	New Build Generating CMU	8.376	15	Storage - Battery
Yiem Group Limited	ROOT-POWER (SOUTH) LIMITED	TIL28B	Yes	New Build Generating CMU	2.513	15	Storage - Battery
Yiem Group Limited	SUTTON POWER LIMITED	SUTT28	Yes	Existing Generating CMU	2.805	1	Gas
Zenobe Borrower Fleetco Limited	ZENOBE RENTAL 12 LIMITED	DSR352	Yes	Unproven DSR CMU	3.100	1	DSR
Zenobe Borrower Fleetco Limited	ZENOBE RENTAL 12 LIMITED	DSRBS5	Yes	Unproven DSR CMU	1.920	15	DSR
Zenobe Borrower Fleetco Limited	ZENOBE RENTAL 12 LIMITED	DSRUU4	Yes	Unproven DSR CMU	1.248	1	DSR
Zenobe Borrower Fleetco Limited	ZENOBE RENTAL 12 LIMITED	DSWAL5	Yes	Unproven DSR CMU	1.000	15	DSR
Zenobe Borrower Fleetco Limited	ZENOBE RENTAL 12 LIMITED	EVINC4	Yes	Unproven DSR CMU	1.198	15	DSR
Zenobe Borrower Fleetco Limited	ZENOBE RENTAL 12 LIMITED	EVLIS3	Yes	Unproven DSR CMU	1.266	15	DSR
Zenobe Borrower Fleetco Limited	ZENOBE RENTAL 12 LIMITED	EVNEW2	Yes	Unproven DSR CMU	1.438	15	DSR
Zenobe Borrower Fleetco Limited	ZENOBE RENTAL 12 LIMITED	EVZE10	Yes	Unproven DSR CMU	3.250	15	DSR
Zenobe Borrower Fleetco Limited	ZENOBE RENTAL 12 LIMITED	EVZE11	Yes	Unproven DSR CMU	1.170	15	DSR
Zenobe Borrower Fleetco Limited	ZENOBE RENTAL 12 LIMITED	EVZE12	Yes	Unproven DSR CMU	1.500	15	DSR
Zenobe Borrower Fleetco Limited	ZENOBE RENTAL 12 LIMITED	EVZE13	Yes	Unproven DSR CMU	1.380	15	DSR
Zenobe Borrower Fleetco Limited	ZENOBE RENTAL 12 LIMITED	EVZE14	Yes	Unproven DSR CMU	1.122	15	DSR
Zenobe Borrower Fleetco Limited	ZENOBE RENTAL 12 LIMITED	EVZE15	Yes	Unproven DSR CMU	2.800	15	DSR
Zenobe Borrower Fleetco Limited	ZENOBE RENTAL 12 LIMITED	EVZE16	Yes	Unproven DSR CMU	1.500	15	DSR
Zenobe Borrower Fleetco Limited	ZENOBE RENTAL 12 LIMITED	EVZE17	Yes	Unproven DSR CMU	1.500	15	DSR
Zenobe Borrower Fleetco Limited	ZENOBE RENTAL 12 LIMITED	EVZE18	Yes	Unproven DSR CMU	1.500	1	DSR
Zenobe Borrower Fleetco Limited	ZENOBE RENTAL 12 LIMITED	EVZE19	Yes	Unproven DSR CMU	1.500	15	DSR
Zenobe Borrower Fleetco Limited	ZENOBE RENTAL 12 LIMITED	EVZEN5	Yes	Unproven DSR CMU	0.988	15	DSR
Zenobe Borrower Fleetco Limited	ZENOBE RENTAL 12 LIMITED	EVZEN6	Yes	Unproven DSR CMU	2.267	15	DSR
Zenobe Borrower Fleetco Limited	ZENOBE RENTAL 12 LIMITED	EVZEN7	Yes	Unproven DSR CMU	1.483	15	DSR
Zenobe Borrower Fleetco Limited	ZENOBE RENTAL 12 LIMITED	EVZEN8	Yes	Unproven DSR CMU	3.923	15	DSR
Zenobe Borrower Fleetco Limited	ZENOBE RENTAL 12 LIMITED	EVZEN9	Yes	Unproven DSR CMU	1.000	15	DSR
Zenobe Borrower Fleetco Limited	ZENOBE RENTAL 12 LIMITED	FVZEN1	Yes	Unproven DSR CMU	1.198	1	DSR
Zenobe Borrower Fleetco Limited	ZENOBE RENTAL 12 LIMITED	FVZEN2	Yes	Unproven DSR CMU	3.698	1	DSR
Zenobe Borrower Fleetco Limited	ZENOBE RENTAL 12 LIMITED	FVZEN3	Yes	Unproven DSR CMU	1.100	15	DSR
Zenobe Borrower Fleetco Limited	ZENOBE RENTAL 12 LIMITED	FVZEN4	Yes	Unproven DSR CMU	1.358	1	DSR
Zenobe Energy Limited	ZENOBE ECCLES LIMITED	NBECL6	Yes	New Build Generating CMU	41.735	15	Storage - Battery
Zenobe Energy Limited	Zenobe Stalybridge Limited	NBSTL3	Yes	New Build Generating CMU	20.936	15	Storage - Battery
Zenobe Energy Limited	Zenobe Stalybridge Limited	NBSTL4	Yes	New Build Generating CMU	10.468	15	Storage - Battery
ZEPHYRUS GREEN ENERGY LTD	ZEPHYRUS GREEN ENERGY LTD	Strath	Yes	Existing Generating CMU	0.531	1	Onshore Wind

National Energy System Operator  
Faraday House  
Warwick Technology Park  
Gallows Hill  
Warwick  
CV34 6DA

[emr@nationalenergyso.com](mailto:emr@nationalenergyso.com)

[www.neso.energy](http://www.neso.energy)

